

- 373 Mrs. H. L. Gardener, MAYTIME SILVER SOLOMON (30), M.N. 22.9.71. Sire, Hillcross Silver Waratah. Dahm, Perrington Silver Moon. Breeder, Mrs. A. Haywood.  
Also in Classes 329, 369.
- 374 Miss M. C. Jenkins, BONNYMUIR JAYNE (18), F.N. 11.7.72. Sire, Ardent Ranger. Dam, Lowenhaus Zohara. Breeder, Exhibitor.  
Also in Classes 274, 276, 287, 369.
- 375 Mr. E. Nash, JEZREEL MARTYN (15), M.N. 20.9.71. Sire, Ch. Jezreel Jomo. Dam, Jezreel Myrena. Breeder, Mrs. I. Johnson.  
Also in Classes 274, 275, 317, 327, 329.
- 376 Mrs. M. Nash, JEZREEL JALETTA (16), F.N. 22.4.69. Sire, Ch. Jezreel Jomo. Dam, Jezreel Myrena. Breeder, Mrs. I. Johnson.  
Also in Classes 274, 275, 276, 317, 329.
- 377 Mrs. K. Protheroe, JEZREEL MANVILLE (15), M.N. 26.5.72. Sire, Jezreel Jackanory. Dam, Jezreel Myrena. Breeder, Mrs. I. Johnson.  
Also in Classes 274, 275, 277.
- 378 Mrs. L. Stokes, BRYNBUBOO MUCHKIN (16), M.N. 19.5.73. Sire, Gr. Ch. Brynbuboo Little Monarch. Dam, Brynbuboo Blue Plush. Breeder, Mrs. P. Absalom.  
Also in Classes 275, 320.

### FOREIGN ADULTS—OPEN CLASSES

#### Class 212.—CHAMPION OF CHAMPIONS, M. or F.

Mrs. Sirovuder

- df* 379 Mrs. A. Budge, CH. KAYSERLING KATHAKADO (27), M. 27.11.72. Sire, Ch. Dinham George. Dam, Linlinkye Chippewa. Breeder, Exhibitor.  
Also in Classes 264, 295, 375.
- 380 Mr. R. Day, CH. SILVERSEAL SELIMA (27), F. 18.3.73. Sire, Ch. Fatsnet Felix. Dam, Silverseal Samantha. Breeder, Mrs. M. Thake.  
Also in Classes 219, 293, 295, 312, 356.
- 381 Mrs. P. D. Wallis, CH. BURTENASHAN SOKOTA (23), F. 5.4.72. Sire, Broughton Macdonald. Dam, Ch. Contented Dawn. Breeder, Mrs. J. M. Simmons.  
Also in Classes 289, 328.
- 382 Miss J. M. Cunningham, CH. KERNOW BLUE KARIBA (27a), F. 16.10.72. Sire, Kernow Blue Rocket. Dam, Kernow Khudiram. Breeder, Mrs. P. Evely.  
Also in Classes 264, 296, 337.
- R* 383 Miss H. Cox, CH. BERILLEON KUAN-YIN (33a), F. 9.7.72. Sire, Amelica Will-o-the Wisp. Dam, Berilleon Erica. Breeder, Mrs. B. Lyon.  
Also in Classes 263, 308, 351.
- 384 Mrs. J. Dell, CH. KUPRO CREAM RAMA (27f), M. 17.2.72. Sire, Kupro Cream Kismet. Dam, Kupro Golden Pandora. Breeder, Exhibitor.  
Also in Classes 222, 298.
- 385 Mrs. J. Hance, CH. KALOS BLUE AEDON (27a), F. 26.3.70. Sire, Ch. Buskins Blue Sunya. Dam, Belcanto Salome. Breeder, Exhibitor.  
Also in Classes 221, 263, 284, 296.
- 386 Mr. F. Warren-Hurlock, CH. BERDOMA ROMULUS (27f), M. 16.5.72. Sire, Kupro Cream Kismet. Dam, Berdoma Myreefah. Breeder, Mrs. B. Cox.  
Also in Classes 222, 340, 364.
- 387 Mrs. M. John, CH. HEPZIBAH BLACK MASAM (33), M. 15.7.72. Sire, Ch. Masambula. Dam, Belhaven Sapphire. Breeder, Exhibitor.  
Also in Classes 265, 306, 349.
- 388 Miss B. Stock, CH. HILLCROSS MINTHAME (27a), F. 24.5.70. Sire, Ch. Sabra Blue Josepu. Dam, Belcanto Blue Lakme. Breeder, Mrs. E. Lowe.  
Also in Classes 284, 296, 316, 360.
- 389 Miss K. Trumper, CH. BURDACH SAUTE POTATO (33), F. 29.2.72. Sire, Burdach Egg Nog. Dam, Burdach Caraway. Breeder, Mrs. V. Gane.  
Also in Classes 230, 263.
- 390 Mrs. J. Waite, CH. SIAVANA FETICHE (29), M. 15.1.73. Sire, Ch. Southview Duakylin. Dam, Asharon Opel. Breeders, Mr. and Mrs. W. Clayton.  
Also in Classes 226, 376.
- 391 Mrs. G. Worthy, CH. HADRIAN BLUE VULCAN (33a), M. 11.10.72. Sire, Sayonara Lilac Warrior. Dam, Hesperian April Dancer. Breeder, Mrs. S. Clark.  
Also in Classes 280, 284, 308, 316.

# Whitehaugh Siamese

AT STUD :

**WHITEHAUGH BLUE FLAME, B.P.**

Sire: Ch. Tamruat Sohpar. Dam: Ch. Whitehaugh Blue Jacklin  
This boy has a lovely light coat

**SIRING PRIZE-WINNING KITTENS**

Heated stud house

See his kittens here today

---

MRS. H. CHALLONER

Ivy Cottage - Cottesmore - Oakham - Rutland  
LE15 7DH

Cottesmore 317 (STD 057-281 317)

---

# FISTRA SIAMESE

At Stud :

**Fistra Sashamand, S.P.**

(Ch. Scimitar Sea Hawk x Herschell Matilda)  
now siring large litters of good type

Our Queens :

**HERSCHELL MATILDA, S.P. (Zoe)**

**KALOKE MELISSA, S.P. (Zigi)**

**RALIUGA ELENA, C.P. (Zsa Zsa)**

---

Kitten and stud enquiries any time to :

MRS. JEAN MURCHISON

FISTRAL, 10 NOAK HILL CLOSE, BILLERICAY, ESSEX

Tel.: Billericay 22734

**Class 213.—RUSSIAN BLUE, M.**

**Mrs. Lauder**

- a 392 Mrs. J. A. Foster, HENGIST KASHKA (16a), M. 20.7.72. Sire, Ch. Hengist Sashcha. Dam, Ch. Hengist Marika. Breeder, Mrs. N. Fiske. Also in Classes 262, 312, 331, 334, 355, 376.
- ldh 393 Mrs. K. Lea, DELOS NIJINSKI (16), M. 24.8.73. Sire, Russchotski Christoff. Dam, Leo-Dun Karenina. Breeders, Mr. and Mrs. Harpum. Also in Classes 262, 264, 284, 337, 360.
- hOB

**Class 214.—RUSSIAN BLUE, F.**

**Mrs. Lauder**

- R 394 Mrs. A. V. Bailey, PRINDOS SILVERTOES (16a), F. 8.10.73. Sire, Bounty-Blue Lefine. Dam, Jennymay Butterfly. Breeder, Mrs. M. Kidd. Also in Classes 261, 262.
- a 395 Mrs. K. Catley, BROADWEIR LUDMILLA (16a), F. 22.3.73. Sire, Ch. Hengist Bitochki. Dam, Anderida Marjoram. Breeder, Mrs. J. Foster. Also in Classes 312, 344, 355.
- hc 396 Miss M. M. Gamble, MANSEL NADEZNA (16a), F. 8.4.72. Sire, Khub-surat Platinum Puss. Dam, Anderida Galina. Breeder, Exhibitor. Also in Classes 263, 265, 284, 365.
- ldh 397 Mrs. B. Jones-Ilsley, CADENZA MOONWIND (16a), F. 8.3.73. Sire, Kab-barps Blue Iris. Dam, Sylphides Katerina. Breeder, Mrs. S. Messenger. Also in Classes 264, 379.
- 3 398 Miss K. Tanner, ZATASHA ANASTASIA (16a), F. 19.7.73. Sire, Ch. Broadweir Fyedka. Dam, Ch. Zatasha Mirakhan. Breeder, Mrs. M. Chambers. Also in Classes 264, 262, 293.
- 2 399 Mrs. K. Lea, DELOS NATASHA (16a), F. 24.8.73. Sire, Russchotski Christoff. Dam, Leo-Dun Karenina. Breeders, Mr. and Mrs. Harpum. Also in Classes 262, 264, 284, 337, 360.

**Class 215.—ABYSSINIAN, M.**

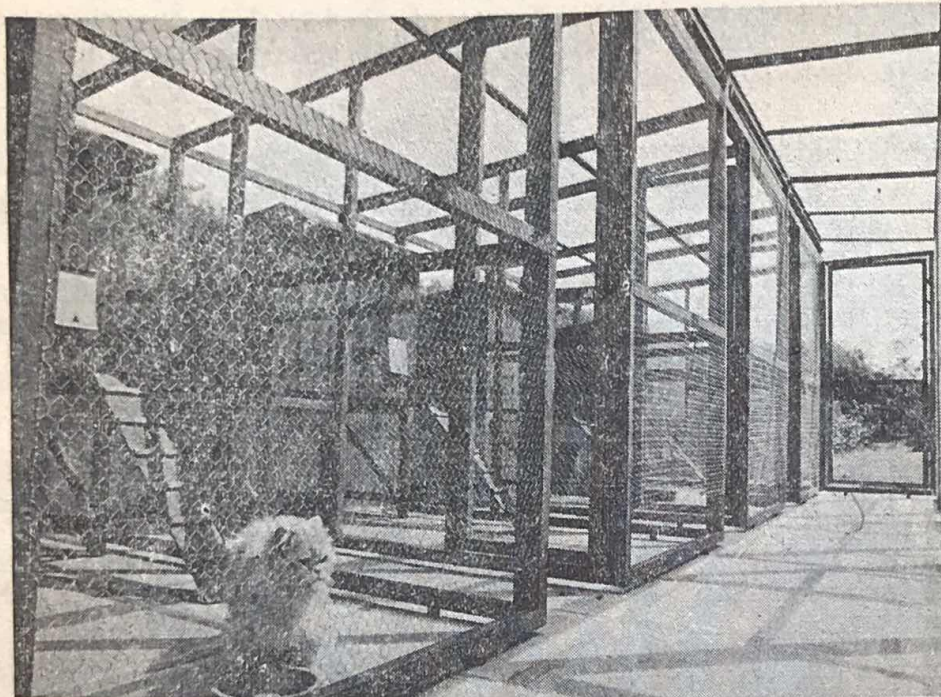
**Mrs. Menezes**

- 3 400 Mrs. J. Simmons, PHILOS ATUM RA (23), M. 8.6.73. Sire, Ch. Rumsam. Dam, Ch. Philos Rose Quartz. Breeder, Miss H. M. Scatchard. Also in Classes 260, 289.
- 401 Mrs. R. A. Howard, CROWFOOT MATTHEW (23), M. 4.3.73. Sire, Contented Sacha. Dam, Pi-Den Makala. Breeder, Mrs. G. M. Leah. Also in Classes 289, 337.
- ldh 402 Mrs. A. J. Ellis, DOBHRAN TOYOTA (23), M. 13.6.73. Sire, Ch. Albyn Justin. Dam, Ch. Burtenashan Sokota. Breeder, Mrs. P. Wallis. Also in Classes 264, 289, 318.
- R 403 Mrs. J. Deacon, KERNOW HECTOR (23), M. 8.4.71. Sire, Kernow Beppo. Dam, Kernow Brandy. Breeder, Mrs. P. Evely. Also in Classes 262, 289.
- 2 404 Mrs. P. M. Champneys, PRINDOS MAZENKA (23), M. 3.12.73. Sire, Prindos Zor Balu. Dam, Ch. Prindos Chacha. Breeder, Mrs. M. Kidd. Also in Classes 264, 289.

**Class 215a.—ABYSSINIAN, F.**

**Mrs. Menezes**

- h 405 Mrs. P. M. Champneys, CONTENTED PANDORA (23), F. 4.9.73. Sire, Ch. Madrigal Dougal. Dam, Contented Benita. Breeder, Miss I. Wiseman. Also in Classes 264, 289.
- 406 Mrs. V. Amey, CHITA TATEETA (23), F. 28.7.73. Sire, Ch. Albyn Justin. Dam, Silversmoke Lady Jane. Breeder, Mrs. N. Young. Also in Classes 264, 289.
- ldh 407 Miss F. A. Bone, ROCKLO THAIS (23), F. 28.8.73. Sire, Michifer Michel Angelo. Dam, Contented Tula. Breeder, Mrs. I. Loveys. Also in Classes 264, 289.
- hcc 408 Mrs. I. M. Boulton, DOBHRAN GRACIOUS (23), F. 13.6.73. Sire, Ch. Albyn Justin. Dam, Ch. Burtenashan Sokota. Breeder, Mrs. P. Wallis. Also in Classes 264, 289, 375, 376.
- 2 409 Mrs. V. H. Buck, DOBHRAN PRYOR LYNX (23), F. 19.11.73. Sire, Ch. Madrigal Dougal. Dam, Gr. Ch. Burtenashan Sokota. Breeder, Mrs. P. Wallis. Also in Classes 261, 264, 289, 318, 328.



# DUNTIBLAE BOARDING CATTERY

“ THE CATTERY FOR CONNOISSEURS ”

The Cattery is situated in ideal country surroundings. Each cat has its own individual eight-foot run. The houses are all insulated and double glazed in addition to which each has an electrically heated bed.

Special attention paid to diet. All cats must be inoculated

BREEDERS OF PERSIAN KITTENS IN ALL COLOURS

At Stud, the lovely winning Cream L.H.

## Mandessa Tweedledum

FEE £9.00

All enquiries to—

**MR. and MRS. J. R. G. COCHRANE**

**Duntiblae, Alderminster, Stratford-on-Avon, Warks.**

On the A34. Inspection invited any time. Brochure on request

- 3 410 Mrs. E. Cracknell, CEIANDA CORIANDERLHN (23), F. 20.5.73. Sire, Ch. Taishun Leo. Dam, Bramble Catina. Breeder, Exhibitor. Also in Classes 265, 289.
- a 411 Miss B. Edwards, SEREMBAN TIKITA (23), F. 30.9.72. Sire, Saamii Tesfa. Dam, Seremban Masumi. Breeder, Mrs. A. Aslin. Also in Classes 264, 280, 289, 375.
- R 412 Mrs. S. Eldin, MKUZI JAHANARA (23), F. 24.5.73. Sire, Ch. Linqunda Giovanni. Dam, Zarach Zinnia. Breeder, Mrs. P. Ingleby. Also in Classes 262, 264, 289, 365.
- 413 Mrs. M. Tomlin, BRAMBLE CALYNDA (23), F. 18.9.73. Sire, Kernow Blue Aquila. Dam, Bramble Balkis. Breeder, Miss B. Saunders-Davies. Also in Classes 258, 259, 262, 289.

**Class 216.—RED ABYSSINIAN, M.**

**Mrs. Menezes**

- 2 414 Mrs. R. B. Alexander, FINISTERRE ZOSER (23a), M. 22.2.73. Sire, Finisterre Amon-Ra. Dam, Finisterre Pasiphae. Breeder, Mr. Z. M. Curran. Also in Classes 258, 259, 260, 291.
- 1 415 Mrs. J. Haigh, BARENTU RED RUDY (23a), M. 4.4.71. Sire, Ch. Bernina Red Hance. Dam, Cefn Florina. Breeder, Mrs. I. Birts. Also in Classes 262, 291.

**Class 217.—CANCELLED. NO ENTRIES.**

**Class 218.—BROWN BURMESE, M.**

**Mrs. Waldo-Lamb**

- Wh 416 Mrs. A. Budge, KAYSERLING OBERON (27), M. 3.12.73. Sire, Ch. Kalos Castor. Dam, Linlinkye Chippewa. Breeder, Exhibitor. Also in Classes 265, 295, 376.
- 3 417 Mrs. P. D. Wallis, MUSCADIN APOLLO (27), M. 7.8.72. Sire, Ch. Kalos Castor. Dam, Muscadin Lazula. Breeder, Mrs. G. M. Allan. Also in Classes 295, 318.
- 418 Mrs. Y. Bruckel, MANTHIERRY THAI MING (27), M. 19.6.73. Sire, Ch. Dinham George. Dam, Huntina Girly. Breeder, Exhibitor. Also in Classes 264, 265, 295, 376.
- R 419 Mrs. J. Clewes, PADDINGTON BEAR (27), M. 25.8.72. Sire, Cameon. Dam, Chintz Chulai. Breeder, Mrs. Schnieder. Also in Classes 295, 356, 379.
- 2 420 Mr. and Mrs. E. B. Young, INDIANQUEEN BROWN BOMBER (27), M. 30.3.73. Sire, Ch. Kupro Cream Rama. Dam, Ch. Indianqueen Amaranth. Breeder, Mrs. P. Short. Also in Classes 261, 264, 284, 295.

**Class 219.—BROWN BURMESE, F.**

**Mrs. Waldo-Lamb**

- ld 380 Mr. R. Day, CH. SILVERSEAL SELIMA (27), F. See Class 212.
- 421 Mrs. E. Seymour-Hall, SAHARAM SEPIA FLOWER (27), F. 29.8.73. Sire, Ch. Kevitor Brown Togo. Dam, Bernina Emmalina. Breeder, Exhibitor. Also in Classes 264, 284, 295, 344, 347, 375, 379.
- 422 Mrs. S. A. Richards, MIBUYA CINDERELLA SIWEI (27), F. 13.11.73. Sire, Kernow Kyle. Dam, Kernow Tesni. Breeder, Mrs. J. E. Page. Also in Classes 259, 264, 295.
- R 423 Miss J. E. Bannister, SILVERSEAL PETRONELLA (27), F. 27.11.72. Sire, Ch. Tapawingo Tahltn. Dam, Sabra Blue Sharon. Breeder, M. Thake. Also in Classes 262, 264, 295.
- 424 Mrs. Q. Barker, STATIONHILL CLEOPATRA (27), F. 9.11.73. Sire, Ch. Kupro Blue Oegin. Dam, Stationhill Adorable. Breeder, Mrs. Wakefield. Also in Classes 258, 259, 260, 261, 262, 264, 284, 295, 316, 318, 328, 337.
- 425 Mr. and Mrs. G. Bennell, MOORINGS HONEY LOTUS (27), F. 24.5.73. Sire, Kiang Khedive. Dam, Moorings Feinics Beag. Breeder, Mrs. F. E. Williams. Also in Classes 258, 260, 264, 280, 295.
- 2 426 Mr. and Mrs. Caldicott, PINOT NOIR (27), F. 29.11.72. Sire, Ch. Dinham George. Dam, Dinham Mariposa. Breeder, J. Norman. Also in Classes 262, 295.
- 427 Mrs. C. A. Cook, SLEEKINE SELINA (27), F. 29.6.73. Sire, Ch. Kevitor Brown Tiger. Dam, Ch. Rochnor Shikari. Breeder, Mrs. S. Peters. Also in Classes 284, 295.



ANNELIDA APRIL LOVE—DEVON REX

## **Annelida Siamese and Rex**

have an international reputation for good health, good type and loveable temperaments

Siamese at Stud :

### **Annelida Secret Legend, S.P.**

Elegant S.P., sire of six Champions

Rex at Stud :

### **Ch. Annelida Fervent Frenchman**

Lovely Solid Black Cornish

### **Watermill Prospero**

Winning young Seal-Pointed Cornish

### **Berilleon Crackles**

Smoke Devon, sire of America's top-winning Devon Adult, 1973-74

### **Annelida Wayfarer**

Pure White Devon

KITTENS FOR SALE

---

**MRS. A. E. ASHFORD, S.R.N.**

**Annelida - Roundwell - Bearsted - Kent - ME14 4HN**

**Tel.: Maidstone 37050**

- 428 Miss S. Harbridge, TSA LOTUS (27), F. 23.8.73. Sire, Ch. Cragland Silver Shadow. Dam, Tsa Mewsun. Breeder, Exhibitor.  
Also in Classes 261, 295, 334.
- 429 Mrs. M. E. Horrobin, LADYFIELD SHEBA (27), F. 18.6.72. Sire, Copplestone Bluer. Dam, Karakat. Breeder, Mrs. M. Greening.  
Also in Classes 262, 295.
- 430 Mrs. R. Warren-Hurlock, KAYSERLING BIANCA (27), F. 3.12.73. Sire, Ch. Kalos Castor. Dam, Linlinkye Chippewa. Breeder, Mrs. A. Budge.  
Also in Classes 284, 295, 328.
- a 431 Mrs. J. Innocent, SUPASTAR CARINA (27), F. 2.8.72. Sire, Ch. Kevitor Brown Tiger. Dam, Procul Koko. Breeder, Exhibitor.  
Also in Classes 265, 295, 312, 333.
- a 432 Mrs. A. L. Jordan, BUSKINS MATI (27), F. 12.12.72. Sire, Kalos Phrixus. Dam, Buskins Blue Kiku. Breeder, Mrs. E. Horne.  
Also in Classes 258, 264, 295.
- 3 433 Mr. and Mrs. R. S. Mortimer, KAYSERLING TAMORA (27), F. 3.12.73. Sire, Ch. Kalos Castor. Dam, Linlinkye Chippewa. Breeder, Mrs. A. Budge.  
Also in Classes 262, 264, 295, 375, 376.
- 434 Mrs. J. Murphy, DOBHRAN SOLONE (27), F. 28.8.73. Sire, Muscadin Apollo. Dam, Burtenashan Katie-Lou. Breeder, Mrs. P. D. Wallis.  
Also in Classes 260, 261, 262, 264, 295, 318.
- 435 Miss B. A. Oliver, LOCHIBANK KATHARINA (27), F. 22.2.73. Sire, Ch. Lochibank Antonio. Dam, Belcanto Jenufa. Breeder, Exhibitor.  
Also in Classes 265, 295.

**Class 220.—BLUE BURMESE, M.**

**Mrs. Giles**

- 1a 436 Mrs. S. A. Fuller, DOBHRAN BLUE-BYTWOLS (27a), M. 28.8.73. Sire, Muscadin Apollo. Dam, Burtenashan Katie-Lou. Breeder, Mrs. P. D. Wallis.  
Also in Classes 261, 264, 318.
- 2 437 Mrs. T. V. Hampson, SUNCHANT SUPERSTAR (27a), M. 1.8.73. Sire, Ch. La-Sun Midas. Dam, Magamba Helena. Breeder, Mrs. J. M. Howes.  
Also in Classes 264, 293, 296, 312, 334.
- R 438 Mr. M. Sklader, KERNOW BLUE DARSHAN (27a), M. 2.4.71. Sire, Aybo Budda. Dam, Rushetts Pussy Willow. Breeder, Mrs. P. Evely.  
Also in Classes 284, 296.
- 3 439 Miss A. Grier, BERDOMA BLUE CADET (27a), M. 30.6.73. Sire, Ch. Bahkta Pilot. Dam, Berdoma Myreefah. Breeder, Mrs. B. Cox.  
Also in Classes 284, 293, 316, 318, 328, 360.

**Class 221.—BLUE BURMESE, F.**

**Mrs. Giles**

- a 385 Mrs. J. Hance, CH. KALOS BLUE AEDON (27a), F. See Class 212.
- 1a 440 Miss J. Dyer, NOELLE SILVER MIST (27a), F. 2.4.72. Sire, Ch. Buskins Chin-Cau. Dam, Faidra Su-Let. Breeder, Mrs. E. Christmas.  
BOS  
Also in Classes 261, 263, 293, 296, 328.
- R 441 Mrs. D. F. Hayes, ILUSKASS INISCARA (27a), F. 27.2.73. Sire, Kernow Blue Rocket. Dam, Kernow Bathsheba. Breders, Mrs. and Miss Proctor.  
Also in Classes 284, 296, 316, 328, 365, 375.
- 3 442 Mr. and Mrs. Caldicott, SABRA BLUE POPPY (27a), F. 14.5.72. Sire, Aybo Budda. Dam, Bastet Sabra Bluerose. Breeders, Misses Silverman and Swift.  
Also in Classes 284, 296.
- HC 443 Mr. and Mrs. J. Green, PIKKO SILVER LADY (27a), F. 23.7.71. Sire, Pussinboots Blue Darrin. Dam, Ch. Hillcross Minthame. Breeder, Miss B. Stock.  
Also in Classes 262, 296.
- a 444 Miss C. Payne, TANGOPAWS SYLVIE (27a), F. 6.5.73. Sire, Ch. Jingo-paws Blue Monarch. Dam, Circle Julia. Breeder, Exhibitor.  
Also in Classes 265, 284, 296.
- 2 445 Mr. M. Sklader, AROLAN KOF KAHOL (27a), F. 15.7.73. Sire, Kernow Blue Darshan. Dam, Arolan Batshir. Breeder, Exhibitor.  
Also in Classes 296, 356.

# **SOVEREIGN SIAMESE**

At Stud :

**CHAMPION CHALMI TAY LADDIE, B.P.**  
Five times Best in Show, also Best Exhibit  
**CHAMPION SOVEREIGN LILAC LANCE, L.P.**  
**SOVEREIGN FROSTY FALCON, L.P., 2 C.C.'s**  
**FOXTWIST ASTRO, C.P., 1 C.C.**

Queens met at Severn Bridge or Cardiff Stations  
Kittens from Laddie and Foxy expected

Enquiries to : **EVELYN and KEN HOLE, Sovereign Lodge, Patchway Cres.**  
Rumney, Cardiff Tel.: 792067

## **"NIWRU" SIAMESE**

offer for sale a lovely little Red-Point Queen of, we believe,  
great promise (Check exhibitors' list for Pen Nos. please)

---

"NIWRU" SIAMESE

B. A. and F. R. BRENNAN

61 MINERVA STREET, BULWELL, NOTTINGHAM NG6 8GS

## **LYNSI SIAMESE**

represented today by

**PREMIER LYNSI SYMBUDGE**

— and —

**LYNSI TOEKEY**

---

JOHN and HELEN ROBERT-SMITH

168 RUSSELL'S RIDE, CHESHUNT

Tel.: Waltham Cross 26290

## **BAYARD SIAMESE**

Seal, Chocolate and Tabby-Pointed Kittens sometimes available, always  
inoculated, registered, house-trained and insured

Queens :

**BAYARD ADAGIO, 24** (Sire: Gr. Ch. Sislinki Topsun)

**BAYARD BARENGARIA, 24b, 1 C.C.** (Sire, Gr. Ch. Seremban-Liger)

Paroma Cleo has now been spayed and is enjoying her well-earned  
retirement

---

MRS. L. STRUNIN

44 Beaulieu Avenue, Sydenham SE26 6PP

Tel.: 01-778 0272

**Class 222.—CREAM BURMESE, M.****Mrs. Van Winsen**

- 2 384 Mrs. J. Dell, CH. KUPRO CREAM RAMA (27f), M. See Class 212.  
 386 Mr. F. Warren-Hurlock, CH. BERDOMA ROMULUS (27f), M.  
 See Class 212.
- a 446 Mrs. R. M. Pocock, PUSSINBOOTS GOLDEN LUSTRE (27f), M. 13.10.71.  
 Sire, Kernow Golden Saffron. Dam, Pussinboots Valldara. Breeder, Ex-  
 hibitor.  
 Also in Classes 263, 328.
- 1 ch 447 Mrs. R. M. Pocock, BOSINVER ST. MULLION (27f), M. 10.8.73. Sire,  
 Plainsong Okima. Dam, Bosinver Marigold. Breeder, Mrs. S. M. Milln.  
 Also in Classes 260, 264.
- 448 Mr. M. Sklader, KERNOW CREAM DAKINI (27f), M. 27.5.71. Sire,  
 Pussinboots Blue Darrin. Dam, Moonacre Meadowsweet. Breeder, Mrs.  
 P. Evely.  
 Also in Classes 293, 316.
- 3 449 Mrs. C. Williams, ASHKORMA ANGUS (27f), M. 10.8.73. Sire, Pussin-  
 boots Golden Lustre. Dam, Sukari Minnette. Breeder, A. Hooper.  
 Also in Classes 261, 262, 264.

**Class 223.—CREAM BURMESE, F.****Mrs. Van Winsen**

- 1 ch 450 Mrs. S. Donnaby, LINLINKYE CREAM CHARISMA (27f), F. 10.11.73.  
 Sire, Ch. Berdoma Romulus. Dam, Kupro Cream Cinchona. Breeder, Mrs.  
 R. Warren-Hurlock.  
 60B Also in Classes 261, 262, 298.
- 2 451 Mrs. M. C. Fleet, PUSSINBOOTS DAFFY-DILLY (27f), F. 1.11.72. Sire,  
 Pussinboots Golden Lustre. Dam, Pussinboots Valldara. Breeder, Mrs. R.  
 M. Pocock.  
 Also in Classes 264, 298, 337.
- 3 452 Mrs. M. E. Horrobin, MELANIN APRICOT (27f), F. 13.2.73. Sire,  
 Melanin Lorenzo. Dam, Melanin Lotus. Breeder, Mr. W. James.  
 Also in Classes 262, 298.

**Class 224.—A.O.C. BURMESE, M.****Mrs. Giles**

- 454 Mrs. R. M. Pocock, CAVCOTS CREIGHTON (27d), M. 28.5.71. Sire,  
 Kupro Cream Chantel. Dam, Kupro Carmella. Breeders, Mrs. and Miss  
 Baylis.  
 Vhc Also in Classes 263, 298.
- 455 Mr. and Mrs. Caldicott, RAMREE TATNA (27b), M. 8.11.73. Sire, Primsu  
 Golden Aquila. Dam, Moorings Feinics Beag. Breeders, Exhibitors.  
 1 50B Also in Classes 265, 297.
- 2 456 Mrs. J. Dell, KUPRO RED IMP (27d), M. 27.4.73. Sire, Ch. Kupro Cream  
 Rama. Dam, Kupro Cholula. Breeder, Exhibitor.  
 Also in Classes 284, 298.
- l 457 Miss C. Payne, PUSSINBOOTS PADDIWAK (27d), M. 26.10.73. Sire,  
 Cavcots Creighton. Dam, Pussinboots Valldara. Breeder, Mrs. R. M.  
 Pocock.  
 Also in Classes 284, 298, 312, 316.
- 3 458 Mrs. and Miss Procter, TYPHA AHMED BEAUTY (27b), M. 4.3.73. Sire,  
 Kernow Kedron. Dam, Moorings Seryna Sadie. Breeder, Mr. R. L. Alger.  
 Also in Classes 264, 297.
- Vhc 459 Mrs. and Miss Procter, KERNOW RED RACER (27d), M. 29.3.72. Sire,  
 Kernow Golden Saffron. Dam, Moonacre Meadowsweet. Breeder, Mrs. P.  
 Evely.  
 Also in Classes 263, 298.

**Class 225.—A.O.C. BURMESE, F.****Mrs. Giles**

- Vhc 460 Mrs. J. Dell, KUPRO RED CIRCE (27d), F. 14.9.73. Sire, Ch. Kupro  
 Cream Rama. Dam, Kupro Cholula. Breeder, Exhibitor.  
 Also in Classes 298, 376.
- 2 461 Mrs. S. Donnaby, BELCANTO PRINCESS CZARDAS (27b), F. 28.4.73.  
 Sire, Ch. Belcanto Don Pasquale. Dam, Jo-dees Belcanto Norma. Breeder,  
 Miss M. Mack.  
 Also in Classes 262, 264, 297.
- 3 462 Mrs. L. J. Harris, KUPRO ARABELLA (27g), F. 15.5.73. Sire, Ch. Kupro  
 Cream Rama. Dam, Kupro Silken Sophina. Breeder, Mrs. J. Dell.  
 Also in Classes 258, 299.



# **FELINE ADVISORY BUREAU**

## **NEW MEMBERS FROM ALL COUNTRIES WELCOME**

Membership in F.A.B. will entitle YOU to advice on  
all Cat problems

- EXTENSIVE RESEARCH LIBRARY
- ADVISORY PANEL OF SCIENTIFIC,  
MEDICAL AND VETERINARY EXPERTS
- INVESTIGATION INTO CAT DISEASES
- APPROVED CATTERY LIST
- BOARDING CATTERY INFORMATION
- QUARTERLY BULLETIN

---

**Write for membership information to :**

**MICHAEL A. FINDLAY, B.V.M.S., M.R.C.V.S.**  
Hon. Secretary  
6 Woodthorpe Road, Putney, SW15 6UQ

---

**10th ANNUAL CONFERENCE**  
**October 19th, 1974**  
**The Meeting Rooms - Regent's Park - London**

- 463 *a* Mrs. H. J. Hewitt, BRAESIDE ROULETTE (27d), F. 7.4.73. Sire, Pussinboots Kangas Roo. Dam, Pussinboots Bambino. Breeder, Exhibitor. Also in Classes 260, 264, 298.
- 464 *R* Mr. D. O'Connor, BELCANTO MAMZELLE NITOUCHE (27b), F. 28.4.73. Sire, Belcanto Don Pasquale. Dam, Jo-dees Belcanto Norma. Breeder, Miss M. Mack. Also in Classes 264, 297, 357.
- 465 *Vhc* Mrs. W. M. Bland, DOLLY GRAY (27g), F. 20.8.73. Sire, Kiang Khedive. Dam, Kernow Moonmist. Breeder, Exhibitor. Also in Classes 258, 260, 302.
- 466 *HC* Mrs. W. M. Bland, TAKAMI MUSUBI (27b), F. 15.1.73. Sire, Kernow Kedron. Dam, Kernow Kari. Breeder, Miss E. Milligan. Also in Classes 259, 260, 297.
- 467 *a* Mrs. B. M. Edwards, PORTIA (27d), F. 23.8.72. Sire, Cavcots Creighton. Dam, Kupro Cream Jasmine. Breeder, Miss J. E. Bannister. Also in Classes 261, 262, 298.
- 468 *1* Mrs. J. A. Osborne, JAVENO MICHELLE (27b), F. 16.7.73. Sire, Kernow Kyle. Dam, Ramree Sweet Caramelle. Breeder, Mrs. J. Avery. Also in Classes 264, 284, 297, 360.

**Class 226.—HAVANA, M.**

**Mrs. Lauder**

- 390 *a* Mrs. J. Waite, CH. SIAVANA FETICHE (29), M. See Class 212.
- 469 *10/11* Miss M. Hathaway, CIARELLA MANIKIN (29), M. 5.8.73. Sire, Ch. Rantree Sawat. Dam, Solitaire Kula. Breeder, Exhibitor. Also in Classes 258, 312, 375.
- 470 *2* Mrs. P. H. Wilding, CH. DANDYCAT WHISTLING RUFUS (29), M. 18.12.72. Sire, Ch. Winceby Imperial. Dam, Ch. Scintilla Copper Beech. Breeder, Exhibitor. Also in Classes 316, 355.

**Class 227.—HAVANA, F.**

**Mrs. Lauder**

- 471 *1ch* Mrs. A. V. Bailey, KALAYA HARVEST GOLD (29), F. 17.6.73. Sire, Beauvallet. Dam, Solitaire Sunslipper. Breeder, Mrs. D. McAllister. Also in Classes 260, 375.
- 472 *c* Mrs. C. E. Eldridge, CHRISTANA MING-TU (29), F. 6.10.73. Sire, Solitaire Tuku. Dam, Framelle Mwani. Breeder, Exhibitor. Also in Classes 261, 264, 265, 316, 365.
- 473 *3* Mrs. J. Evans, CHRISTANA SAADI (29), F. 6.10.73. Sire, Solitaire Tuku. Dam, Framelle Mwani. Breeder, Mrs. C. E. Eldridge. Also in Classes 258, 259, 260.
- 474 *R* Mrs. H. D. Foy, CEEDEE-EM HULA (29), F. 27.6.73. Sire, Siavana Baloo. Dam, Ceedee-em Cachet. Breeder, Mrs. S. McLean-Inglis. Also in Classes 262, 264, 284.
- 475 *2* Mrs. L. Perkins, CEEDEE-EM KAPIDLANI (29), F. 21.1.73. Sire, Siavana Baloo. Dam, Ceedee-em Cachet. Breeder, Mrs. S. McLean-Inglis. Also in Classes 258, 259.

**Class 228.—FOREIGN LILAC, M. or F.**

**Mrs. Lauder**

- 476 *1* Mrs. V. Gane, BUZZYWIG ALPHA (29c), M. 22.8.73. Sire, Burdach Naatiffe. Dam, Solitaire Bellette. Breeder, Mrs. H. Rose. Also in Classes 355, 373.

**Class 229.—CORNISH REX, M.**

**Miss Woodger**

- 477 *3* Mrs. L. P. Heath, LOHTEYN MAGNIFICAT (33), M. 22.6.73. Sire, Lohteyn Kat Mandy. Dam, Lohteyn Shy Anne. Breeder, Exhibitor. Also in Classes 284, 306, 349.
- 478 *a* Mrs. M. John, HEPHZIBAH CERTAIN PERSONIO (33), M. 18.8.73. Sire, Watermill New Penny. Dam, Hephzibah Fair Ophelia. Breeder, Exhibitor. Also in Classes 265, 306, 349.
- 479 *a* Mrs. I. E. Sherry, WATERMILL ROYAL DAVID (33), M. 19.12.72. Sire, Ch. Elan Lord Nelson. Dam, Watermill Boronia. Breeder, Miss A. Codrington. Also in Classes 264, 306.

# **NORTHALA CATS**

SIAMESE AND PERSIANS  
AT STUD (IN HEATED HOUSES)

## **CH. TIBAAN FOETIOUS**

L.P. SIAMESE  
Ch. Roundway Osmanthus x Kosmos Crystal

## **CH. NORTHALA MERRY MONARCH**

L.H. SILVER TABBY  
Dorstan Destino x Hartland Josephina

## **CH. WILMAR WILLINGTON**

L.H. SILVER TABBY  
Ch. Dorstan Darius x Wilmar Willa

## **CAMBER KELLY**

BLUE PERSIAN  
Ch. Camber Valient x Ch. Camber Rosebud

---

All the above Studs are proven and siring kittens of show  
quality

Every care given to visiting queens, who must have a current  
inoculation certificate

---

Stud and kitten enquiries :

**MRS. LESLEY PERKINS**  
**284 Church Road - Northolt**  
**Middlesex UB5 5AW**  
Telephone : 01-845 5452

- 2 480 Mrs. A. H. Watts, DU-BU SAMSON (33), M. 6.4.72. Sire, Amaska Muscatel. Dam, Du-Bu Nankypoo. Breeder, Exhibitor. Also in Classes 259, 263, 265, 264.
- cbm 481 Mrs. A. H. Watts, DU-BU MARCEL (33), M. 19.6.72. Sire, Amaska Muscatel. Dam, Du-Bu Sesame. Breeder, Exhibitor. Also in Classes 258, 260, 263, 265.
- ldh 482 Mrs. S. R. Wheeler, KIMSTAR PARSLEY (33), M. 22.4.73. Sire, Ch. Annelida Fervent Frenchman. Dam, Quintella Abelia. Breeder, Exhibitor. Also in Classes 260, 262, 265, 306.

**Class 230.—CORNISH REX, F.**

**Miss Woodger**

- 2 389 Miss K. Trumper, CH. BURDACH SAUTE POTATO (33), F. See Class 212.
- 3 483 Miss A. Coleman, OAKHILL SAINT MILDRED (33), F. 12.9.73. Sire, Oakhill Canterbell-Harry. Dam, Oakhill Victoria Plum. Breeder, Exhibitor. Also in Classes 262, 265, 306, 349.
- R 484 Mrs. L. P. Heath, LOHTEYN THINGUMMY (33), F. 31.10.73. Sire, Lohteyn Merumau Pegoh. Dam, Lohteyn Miss Tique. Breeder, Exhibitor. Also in Classes 349, 375.
- a 485 Mrs. L. P. Heath, LOHTEYN QUEEN HATSHEPSUT (33), F. 12.5.72. Sire, Ch. Elan Ali Baba. Dam, Ch. Lohteyn Travellers Joy. Breeder, Exhibitor. Also in Classes 306, 349, 360.
- ldh 486 Mrs. G. A. Hilleard, PIKKO ENCHANTRESS (33), F. 25.7.72. Sire, Ch. Elan Ali Baba. Dam, Annelida Enchantress. Breeder, Miss B. Stock. Also in Classes 316, 337, 360, 365.
- a 487 Mrs. J. M. Hunt, MARINA HIJA (33), F. 16.5.73. Sire, Ch. Marina Arico. Dam, Ch. Annelida Martini. Breeder, Mrs. B. Dixon. Also in Classes 306, 312, 345.

**Class 231.—DEVON REX, M.**

**Mrs. Shrouder**

- 3 488 Mrs. M. R. Finnegan, AMHARIC COEUR DE LION (33a), M. 18.4.72. Sire, Ch. Romid Canasta. Dam, Amharic Bleupoint Fleur. Breeder, Mrs. M. L. Knight. Also in Classes 261, 262, 263, 308, 351.
- 2 489 Miss A. L. Oliver, MIRAMAR BEELZEBUB (33a), M. 5.3.73. Sire, Berileon Crackles. Dam, Ch. Marisarni Voodoo. Breeder, Mrs. M. Finnegan. Also in Classes 308, 351.
- ldh 490 Mrs. B. C. Slawson, BRYLOU JASPER (33a), M. 5.6.73. Sire, Pearcroft Sacha. Dam, Cosmic Jenny Comelately. Breeder, Mrs. Stevenson. Also in Classes 264, 305, 351.
- R 491 Mrs. N. Wakeford, SIRAFEN CHOCOLAT SOLDIER (33a), M. 15.9.73. Sire, Sirafen Worthy Khan. Dam, Sirafen Blue Orchid. Breeder, Exhibitor. Also in Classes 258, 259, 260, 264, 265, 293, 312, 351, 355.

**Class 232.—DEVON REX, F.**

**Mrs. Shrouder**

- a 492 Mr. and Mrs. Barnard, SIRAFEN LADY ANNA (33a), F. 25.8.73. Sire, Sirafen Worthy Khan. Dam, Sirafen White Mist. Breeder, Mrs. Wakeford. Also in Classes 260, 262, 364.
- 2 493 Mr. and Mrs. R. W. Gee, COSMIC LOVING SPOONFUL (33a), F. 15.5.73. Sire, Sayonara Lilac Lochinvar. Dam, Amharic Arvenbloom. Breeder, Mrs. A. Defoore. Also in Classes 258, 261, 308, 351.
- vuc 494 Mrs. L. Humphreys, MIRAMAR PRETTY WITCH (33a), F. 2.9.73. Sire, Sayonara Lilac Lochinvar. Dam, Marisarni Little Witch. Breeder, Mrs. M. R. Finnegan. Also in Classes 260, 261, 262, 264, 308, 351.
- im 495 Mrs. L. Humphreys, ANNELIDA WISLAGIATT (33a), F. 26.6.73. Sire, Pearcroft Sacha. Dam, Annelida April Love. Breeder, Mrs. A. E. Ashford. Also in Classes 260, 261, 262, 264, 308, 351.
- R 496 Mrs. K. Jensen, SEAWITCH BLUE CAN CAN (33a), F. 18.8.73. Sire, Ch. Romid Canasta. Dam, Hesperian Pretty Pagan. Breeders, Messrs. Thurman and Heffernan. Also in Classes 260, 262.

Palantir Cats &

**PHAEON  
CATS**

**Siamese and Foreign in assorted colours**

**Queens :**

**SHANTAI SUN FLOWER**  
(R.P.)

**PALANTIR GALADRIEL**  
(B.To.P.)

**SOUTHVIEW DUAHA**  
(26)

**PHAEON PHANTAMOV**  
**THEOPRA**

(F. LILAC)

**PHAEON**  
**PHANTASMAGORIA**  
(F. CHOC. SPOTTED)

**Enquiries :**

**Julia M. May**  
**265 Green Lanes**  
**London, N13**  
**01-886 6705**

**Alan R. Finn**  
**86 Weston Park**  
**London, N8 9PP**  
**01-348 4200**

**On show today . . .**

## **Thairano Siamese**

**THAIRANO DANDYLION and some of his kittens**

Dandylion is a Lilac-Point, outstanding for his pale coat and elegant shape. He has two C.C.'s and has won Best in Show and Best of Breed awards as a kitten.

At stud, he is siring kittens of beauty and adorable temperament; their recent wins include Best in Show Kitten (Reserve Best Exhibit), at the S.C.A. Show, 1974, and Best Lilac Male, Essex C.C. Show, 1974.

---

**STUD AND KITTEN ENQUIRIES SHOULD BE MADE TO THEIR  
BREEDER :**

**MRS. ROSEMARY BENNETT**  
**Shortwood, 38 Sylvana Close, Vine Lane, Hillingdon**  
**Middlesex**

**Tel.: Uxbridge 52877**

**Specimen pedigrees available on request**

- a 497 Mrs. B. J. Lyon, BERILLEON FANTZIPANTZ (33a), F. 8.6.71. Sire, Ch. Sunbronze Danny Boy. Dam, Berilleon Erica. Breeder, Exhibitor. Also in Classes 265, 308, 351.
- 498 Mrs. E. M. Turner, ALDEN CORRIANDA (33a), F. 28.9.73. Sire, Alden Blue Cassius. Dam, Kernow Krystal. Breeder, Mr. F. A. Bell. Also in Classes 261, 262, 333.
- 3 499 Miss B. J. Barclay, SAFFRONICUS SASUKI (33a), F. 28.7.73. Sire, Alden Casanova. Dam, Saffronicus Chiyono. Breeder, Exhibitor. Also in Classes 265, 308, 312, 331, 351, 379.

**Class 233.—A.O.V. (BREED 26), M. or F.**

**Mrs. Shrouder**

- a 500 Miss C. M. Rowson, BARANDWIN JIN (26), F. 25.9.71. Sire, Ch. Dandy-cat Brown Bear. Dam, Barandwin Arwen. Breeder, Mrs. L. Badcock. Also in Class 266.
- 1 501 Miss B. Saunders-Davies, BRAMBLE CLORINDA (26), F. 19.9.72. Sire, Kernow Hector. Dam, Bramble Balkis. Breeder, Exhibitor. Also in Classes 266, 366.
- a 502 Mrs. R. J. Caunter, BRAMBLE CORYDON (26), M. 19.9.72. Sire, Kernow Hector. Dam, Bramble Balkis. Breeder, Miss B. Saunders-Davies. Also in Class 266.
- a 503 Mrs. R. J. Caunter, THICKTHORN SHANDI-LA (26), F. 26.1.71. Sire, Umah of Selworthy. Dam, Thickthorn Amber Rose. Breeder, Exhibitor. Also in Class 266.

**Class 233a.—FOREIGN WHITE, M. or F.**

**Mrs. Shrouder**

- 504 Mrs. M. E. Jones, MEMKOO ALEXANDROS (35), M. 1.12.73. Sire, Gr. Ch. Cymbeline Sans Pareil. Dam, Margwyn Polar Queen. Breeder, Exhibitor. Also in Classes 265, 318, 322, 324, 371.
- 1 505 Miss L. J. Clayton, SCINTILLA TE-SHENG (35), M. 7.11.73. Sire, Nasyla Tomasinius. Dam, Scintilla Shan-Cha. Breeder, Miss P. Turner. Also in Classes 260, 293, 371.
- 2 506 Mr. and Mrs. T. Macaulay, HEATHERAL HIGHLAND LASS (35), F. 15.6.72. Sire, Ch. Longacres Jeremy. Dam, Newington Corabelle. Breeder, Exhibitor. Also in Classes 265, 284, 322, 371.

**FOREIGN KITTENS—OPEN CLASSES**

**Class 234.—RUSSIAN BLUE (3-9 months), M. or F.**

**Mrs. Lauder**

- 1 507 Mrs. K. Catley, ZATASHA IVANOV (16a), M. 20.3.74. Sire, Ch. Broadweir Fyedka. Dam, Ch. Zatasha Mirakhan. Breeder, Mrs. M. Chambers. Also in Classes 285, 270, 313, 355.
- 3 508 Miss M. A. Morris, SHUSHKARINA (16a), F. 26.12.73. Sire, Ch. Arctic Mimulus. Dam, Angelina. Breeder, Miss D. Evans. Also in Classes 270, 271, 319.
- 2 509 Mrs. J. Waite, SYLPHIDES SYLVAMIST (16a), M. 22.3.74. Sire, Ch. Jennymay Fingal. Dam, Sylphides Sylvashema. Breeder, Mrs. M. A. Read. Also in Classes 267, 269.

**Class 235.—ABYSSINIAN (3-9 months), M.**

**Mrs. Menezes**

- 1 510 Mrs. M. J. Dwight, CHITA RA (23), M. 27.3.74. Sire, Ch. Albyn Justin. Dam, Silversmoke Lady Jane. Breeder, Mrs. N. Young. Also in Classes 268, 270.

**Class 236.—ABYSSINIAN (3-9 months), F.**

**Mrs. Menezes**

- a 511 Mr. A. Smith, DANBECK TEKOA (23), F. 27.4.74. Sire, Barentu Red Rudy. Dam, Contented Calypso. Breeder, Mrs. J. Haigh. Also in Classes 267, 268.
- R 512 Mrs. P. L. Thompson, DEARING CAMELLA (23), F. 12.4.74. Sire, Dearing Datsma Boy. Dam, Dearing Kwikly Kwikly. Breeder, Mrs. E. Reading. Also in Classes 267, 268.
- 3 513 Mrs. E. Cracknell, CEIANDA KISMET (23), F. 15.5.74. Sire, Ch. Madrigal Dougal. Dam, Bramble Catina. Breeder, Exhibitor. Also in Classes 272, 290.

# PENYRALLT

## **KILLDOWN BEAUREGARD, 1 C.C.**

Sire: Champion Longacres Jeremy.  
Best Seal-Point Kitten, National, Olympia, 1973  
Best Siamese Male, Southern Counties, 1974

At limited stud from January, 1975

### **PROGENY :**

#### **PENYRALLT PICASSO (S.P.)**

Dam: Cymbeline Katishe  
Best Seal-Point Male Kitten and Best in Show Kitten, Essex Show, July, 1974  
Best Seal-Point Kitten and Best in Show Siamese Kitten, Kensington Show, July, 1974

#### **PENYRALLT PLANTAGENET (S.P.)**

Best Seal-Point Kitten, Best Siamese Kitten and Best Siamese Exhibit, Bingley, August, 1974

#### **PENYRALLT PHAEDRA (S.P.)**

Dam: Champion Whirligig Tsaritsa  
Best Seal-Point Female Kitten and runner-up Best Kitten, Essex Show, July, 1974

### **QUEENS :**

#### **CYMBELINE KATISHE (S.P.)**

Sire: Champion Killdown Vanguard

#### **CHAMPION WHIRLIGIG TSARITSA (L.P.)**

4 C.C.'s

Sire: Champion Karenza Apollo  
Best Siamese Female Exhibit at the Siamese Cat Club Show, October, 1973

#### **SOVEREIGN TSARINA (S.P.)**

Sire: Champion Karenza Lilac Domino

---

**V. V. ATHAVALE**

Penyrallt Mansion, Pentrecourt, Nr. Llandyssul  
Cardiganshire

Tel.: VELINDRE 610

- 2 514 Miss B. Edwards, EGYPTIAN PRINCESS (23), F. 4.6.74. Sire, Ch. Albyn Justin. Dam, Seremban Tikita. Breeder, Exhibitor. Also in Classes 267, 290.
- 1 515 Miss B. Edwards, PETITE FLEUR (23), F. 4.6.74. Sire, Ch. Albyn Justin. Dam, Seremban Tikita. Breeder, Exhibitor. Also in Classes 268, 290.

**Class 237.—RED ABYSSINIAN (3-9 months), M. or F. Mrs. Menezes**

- 3 516 Mrs. E. Cracknell, CEIANDA SUNSHINE (23a), F. 15.5.74. Sire, Ch. Madrigal Dougal. Dam, Bramble Catina. Breeder, Exhibitor. Also in Classes 272, 292.
- 1 517 Mrs. E. Cracknell, CEIANDA COPPER CAIUS (23a), M. 15.4.74. Sire, Ch. Madrigal Dougal. Dam, Bramble Catina. Breeder, Exhibitor. Also in Classes 272, 292.
- a 518 Miss B. Edwards, COPPER CHARISMA (23a), F. 4.6.74. Sire, Ch. Albyn Justin. Dam, Seremban Tikita. Breeder, Exhibitor. Also in Classes 272, 292.
- 2 519 Mrs. J. M. Simmons, BURTENASHAN SHIMOGA (23a), F. 22.5.74. Sire, Philos Atum Ra. Dam, Chita Rosita. Breeder, Exhibitor. Also in Classes 272, 292, 319.
- R 520 Mr. and Mrs. J. A. Turner, SANCHARMA PROMISE (23a), F. 26.4.74. Sire, Ch. Shybu Koralai. Dam, Pangaban Maat. Breeder, Exhibitor. Also in Classes 272, 292, 326.

**Class 238.—BROWN BURMESE (3-9 months), M. Mrs. Bentinck**

- 1 521 Mrs. B. Stapleton, TANTABIN PROSPERO (27), M.N. 31.1.74. Sire, Kupro Cream Rama. Dam, Sleekine Suki. Breeder, Exhibitor. Also in Classes 267, 269, 293, 300.
- 522 Miss C. E. C. Thomas, JUMPING JACK FLASH (27), M. 4.5.74. Sire, Ch. Bernina Apollo. Dam, Little Mint Julip. Breeder, Exhibitor. Also in Classes 267, 268, 300.
- 523 Mr. K. L. Everett, TECTONA GRANDUS (27), M. 18.2.74. Sire, Ch. Linlinkye Matanga. Dam, Tapawingo Febe. Breeder, Exhibitor. Also in Classes 272, 300.
- R 524 Mrs. J. Hance, KALOS MELENIOS (27), M. 10.5.74. Sire, Paddington Bear. Dam, Kalos Glue Kitrea. Breeder, Exhibitor. Also in Classes 267, 272, 361, 364.
- the 525 Mrs. P. J. Healey, CHARGALE KANELLA (27), M. 18.1.74. Sire, Kalos Castor. Dam, Goldney Sappho. Breeder, Mrs. J. Birch. Also in Classes 268, 300.
- 526 Miss B. A. Oliver, LOCHIBANK GRATIANO (27), M. 16.4.74. Sire, Belcanto Sadko. Dam, Lochibank Katharina. Breeder, Exhibitor. Also in Classes 267, 300.
- 2 527 Mrs. M. Padgett, INDIANQUEEN DANIEL (27), M. 25.1.74. Sire, Ch. Kupro Cream Rama. Dam, Ch. Indianqueen Amaranth. Breeder, Mrs. P. Short. Also in Classes 267, 268, 269, 270, 300.
- 528 Misses M. R. Silverman and M. K. Swift, SABRA TOM BROWN (27), M. 27.5.74. Sire, Kernow Blue Rocket. Dam, Kernow Honeysuckle Lu. Breeders, Exhibitors. Also in Classes 267, 270, 300.
- a 529 Misses M. R. Silverman and M. K. Swift, SABRA BERNADOO BROWN (27), M. 27.5.74. Sire, Kernow Blue Rocket. Dam, Kernow Honeysuckle Lu. Breeders, Exhibitors. Also in Classes 267, 270, 300.
- 3 530 Mrs. R. J. Caunter, THICKTHORN VERVET (27), M. 21.5.74. Sire, Ch. Dinham George. Dam, Honeypot Tamarisk. Breeder, Exhibitor. Also in Classes 267, 300.

**Class 239.—BROWN BURMESE (3-9 months), F. Mrs. Bentinck**

- 531 Mr. E. J. Allen, KLARIKAM KATE (27), F. 17.12.73. Sire, Ch. Belcanto Don Pasquale. Dam, Klarikam Chloe. Breeder, Mr. R. Bickerton. Also in Classes 269, 271, 280, 285, 300, 326, 338.
- 532 Mrs. L. Wilkins, DOBHRAN CHARLIE GIRL (27), F. 11.5.74. Sire, Muscadin Apollo. Dam, Burtenashan Pegu. Breeder, Mrs. P. D. Wallis. Also in Classes 267, 268, 269, 270, 271, 319.

# ROMYLLIAN SIAMESE

**BLUE-POINTS, ETC., OF GOOD TYPE, SUPER TEMPERAMENTS**

Some past highlights :

## **WARLORD**

1st Prem. and Best of Breed, National Cat Show, '72. 2nd Prem., five 1sts, Best of Breed, Suffolk Show, '73. Three 1sts, Hull Corporation Trophy for B.I.S. Neuter, Hull, '73.

## **LOCH LEGEND**

Three 1sts, winner of Donyana Cup and Apingdon Cup, Northern Siamese, '73. Three 1sts, 2nd, Best Kitten, Hazel Grove, '73. 1st C.C., 2nd Best of Breed, winner of Ch. Sayo of Bedale Cup, Herts. and Middlesex, '73. 2nd C.C., 1st, 2nd, Best of Breed, National, '73.

## **DIXIE MELODY**

Owner, Mrs. Crawshaw. Three 1sts, Best of Breed, Midland Counties, '73. Dixie was unbeaten in open classes as a kitten. 1st (open), five 2nds, Coventry and Leicester, '74.

## **ROMANY RYE**

Owner, Mr. Rex Thornton. 1st, etc., Best of Breed, National, '73. Three 2nds, two 3rds, Preston, '73. Two 1sts, etc., Best of Breed, Suffolk, '74.

## **BLUE RADIANCE**

1st C.C., six 1sts, two 2nds, nom. B.I.S., Coventry and Leicester, '74.

## **GYPSY TROUBADOUR**

Owner, Mrs. Coutts. 3rd Prem., Best in Show Neuter, Blackpool, '73. One Prem., Best in Show (unanimous), Montrose, '74.

---

Enquiries for Stud and Kittens to :

**MARGE NEWSTEAD**

Shady Nook - Moor Road - Bottesford Moor  
Yaddlethorpe - Scunthorpe - Lincs. DN17 2BS

- 533 Mr. and Mrs. Caldicott, SWEET CHARITY (27), F. 1.5.74. Sire, Aybo Budda. Dam, Pinot Noir. Breeder, Mrs. K. Lockett.  
Also in Classes 267, 300.
- 534 Mrs. S. M. Colvill, COLPETRA (27), F. 2.5.74. Sire, Kevitor Brown Merimac. Dam, Freefolk Tanya. Breeder, Mrs. P. Healey.  
Also in Classes 285, 361.
- 535 Mr. K. L. Everett, TECTONA CHANTAL (27), F. 18.2.74. Sire, Ch. Linkye Matanga. Dam, Tapawingo Febe. Breeder, Exhibitor.  
Also in Classes 268, 364.
- 536 Mrs. J. Hance, KALOS MELIA (27), F. 10.5.74. Sire, Paddington Bear. Dam, Kalos Blue Kitrea. Breeder, Exhibitor.  
Also in Classes 267, 272, 361, 364.
- 537 Mrs. A. Johnston, AROLAN OLWYNS DREAM (27), F. 8.12.73. Sire, Kerhow Kano. Dam, Kernow Kute Kandy. Breeder, M. Sklader.  
Also in Classes 267, 268, 300.
- 538 Mrs. C. McPhee, KEVITOR BROWN ANGELICA (27), F. 23.4.74. Sire, Ch. Tapawingo Tahltan. Dam, Gur Ami. Breeder, Mrs. M. Somers.  
Also in Classes 268, 300, 319, 356.
- 539 Miss W. F. Rogers, GRANDOAK ELIZABETH (27), F. 18.2.74. Sire, Belfort Belcanto Le Coq Dor. Dam, Grandoak Matilda. Breeder, Mr. D. F. Case.  
Also in Classes 267, 268, 300.
- 2 540 Mrs. V. Staff, BUSKINS SABUKI (27), F. 27.2.74. Sire, Kalos Phrixus. Dam, Buskins Betchine. Breeder, Mrs. F. Horne.  
Also in Classes 270, 271, 319, 375.
- 541 Mr. and Mrs. E. B. Young, BONNEFOY BRUNNHILDE (27), F. 2.3.74. Sire, Indianqueen Brown Bomber. Dam, Indianqueen Estella. Breeder, Exhibitor.  
Also in Classes 267, 268, 272, 285, 300.
- 542 Mrs. J. M. P. Wilkinson, KATHAKALI SUN CHARIOT (27), F. 25.5.74. Sire, Ch. Kalos Castor. Dam, Ch. Kathakali Petite Etoile. Breeder, Exhibitor.  
Also in Classes 267, 300, 364.
- Vx 543 Mrs. J. M. P. Wilkinson, KATHAKALI MYSTERIOUS (27), F. 18.4.74. Sire, Kernow Lilac Kerconnao. Dam, Boronga Kathi. Breeder, Exhibitor.  
Also in Classes 270, 300, 364.
- R 544 Mrs. R. J. Caunter, THICKTHORN MARMOSET (27), F. 21.5.74. Sire, Ch. Dinham George. Dam, Honeypot Tamarisk. Breeder, Exhibitor.  
Also in Classes 269, 300.
- 1 545 Miss K. J. Trendle, NATASHA STARLIGHT JOYSTAR (27), F. 27.3.74. Sire, Ch. Tapawingo Tagish Pussinboots. Dam, Elfin Tasha. Breeder, Miss J. Dale.  
Also in Classes 269, 300.
- 3 546 Mrs. J. Bishop, MAORESQUE EMELIA (27), F. 2.4.74. Sire, Belcanto Don Pasquale. Dam, Helsby Ahuna. Breeder, Exhibitor.  
Also in Classes 267, 268, 269, 272, 280.

**Class 240.—BLUE BURMESE (3-9 months), M.**

**Mrs. Somers**

- 3 547 Miss J. M. Cunningham, BOJANGLES PINOCCHIO (27a), M. 6.6.74. Sire, Kernow Lilac Kerconnao. Dam, Ch. Kernow Blue Kariba. Breeder, Exhibitor.  
Also in Classes 272, 301.
- 1 548 Mrs. J. Hance, KALOS BLUE MICON (27a), M. 10.5.74. Sire, Paddington Bear. Dam, Kalos Blue Kitrea. Breeder, Exhibitor.  
Also in Classes 272, 285, 301, 361.
- ~ 549 Mrs. A. L. Jordan, BLUE OSCAR (27a), M. 18.2.74. Sire, Dinham Damian. Dam, Buskins Mati. Breeder, Exhibitor.  
Also in Classes 268, 301.
- R 550 Mrs. J. M. P. Wilkinson, KATHAKALI TIRESIAS (27a), M. 25.5.74. Sire, Ch. Kalos Castor. Dam, Ch. Kathakali Petite Etoile. Breeder, Exhibitor.  
Also in Classes 268, 301.
- 2 551 Mrs. J. M. P. Wilkinson, KATHAKALI TETRARCH (27a), M. 18.4.74. Sire, Kernow Lilac Kerconnao. Dam, Boronga Kathi. Breeder, Exhibitor.  
Also in Classes 272, 301, 356, 364.

# Tabby Point Siamese and Progressive Breeders Cat Club

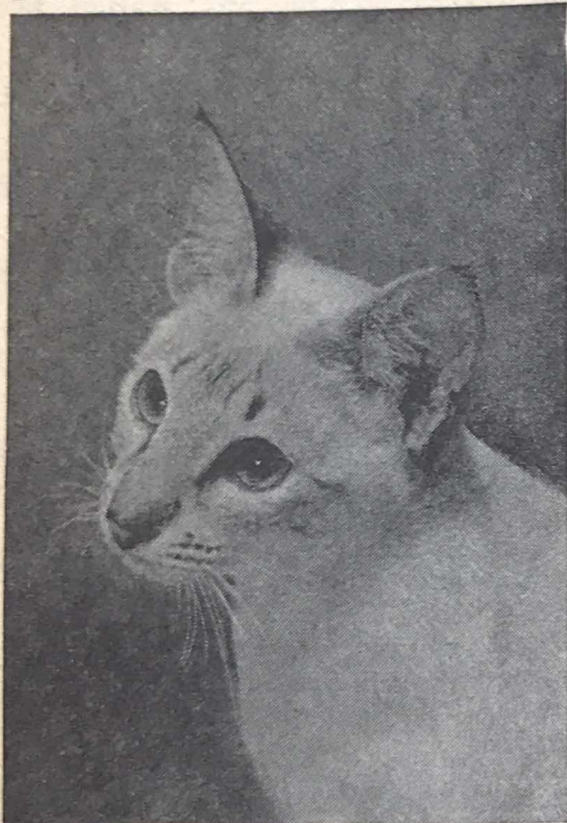


Photo by Raymond Garnett

A Specialist Club for Tabby-Point Siamese, also A.O.V. Siamese and Siamese type S.H. achieving recognition after March, 1973

President:  
MRS. HINDLEY

Chairman: Mrs. Nancy Hardy  
Hon. Sec.: MISS GAMBLE,  
The Lodge, Farningham Hill,  
Farningham, Kent.

Hon. Treas.: Mrs. Hunt,  
23 Copphill Lane,  
Budleigh Salterton, Devon.

Show Secretary:  
Mrs. K. Burgess,  
31 Balcaskie Rd., London, S.E.9

Subscriptions 50p per annum.

Affiliated to the G.C.C.F.

## ROSAKI SIAMESE

Kittens by  
Cantarra Tarquin (24) x Sylba Rosie Rainbow (32b)  
expected early September

AT STUD :

**Edleena Mantora (24b)**

Best in Show at Lincoln, 1974

MRS. ROSALIE SIMPSON

1 Jasper Close - Radcliffe-on-Trent - Notts.

Tel.: 06073 4214

**Class 241.—BLUE BURMESE (3-9 months), F. Mrs. Somers**

- a 552 Mrs. L. Curds, KABOOBI AZALEA (27a), F. 21.1.74. Sire, Typha Ahmed Beauty. Dam, Iluskass Iniscara. Breeder, Mrs. D. F. Hayes. Also in Classes 267, 269, 271.
- Wh 553 Mrs. M. F. Forbes-Crease, BLUE COCKADE (27a), F. 11.5.74. Sire, Ch. Kalos Castor. Dam, Merrymouth Bula Pore. Breeder, Exhibitor. Also in Classes 267, 269, 301.
- 554 Miss J. M. Cunningham, BOJANGLES TIGGYWINKLE (27a), F. 6.6.74. Sire, Kernow Lilac Kerconnao. Dam, Ch. Kernow Blue Kariba. Breeder, Exhibitor. Also in Classes 272, 301.
- 555 Miss J. M. Cunningham, BOJANGLES BLUEBIRD (27a), F. 6.6.74. Sire, Kernow Lilac Kerconnao. Dam, Ch. Kernow Blue Kariba. Breeder, Exhibitor. Also in Classes 272, 301.
- 2 556 Miss M. Mack, BELCANTO LUCRETIA (27a), F. 1.1.74. Sire, Ch. Belcanto Don Pasquale. Dam, Ch. Belcanto Daphne. Breeder, Exhibitor. Also in Classes 267, 268, 301.
- Wh 557 Mrs. J. Murphy, BURTENASHAN WYANDRA (27a), F. 3.3.74. Sire, Muscadin Apollo. Dam, Burtenashan Tani. Breeder, Mrs. J. M. Simmons. Also in Classes 267, 269, 270, 271, 301, 319.
- a 558 Mr. A. Smith, BOWERSCROFT GALAXY (27a), F. 6.3.74. Sire, Bahkta Pilot. Dam, Bowerscroft Silver Birch. Breeder, Miss M. Jameson. Also in Classes 267, 268.
- 3 559 Mrs. F. E. Williams, MOORINGS QING MING (27a), F. 23.3.74. Sire, Aybo Budda. Dam, Moorings Silver Mist. Breeder, Exhibitor. Also in Classes 270, 271, 272, 285, 301, 326.
- 1 560 Miss M. Young, BONNEFOY BLUE BELLE (27a), F. 2.3.74. Sire, Indianqueen Brown Bomber. Dam, Indianqueen Estella. Breeders, Mr. and Mrs. E. B. Young. Also in Classes 269, 271, 301.
- R 561 Mrs. V. H. Buck, DOBHRAN STEELEYE (27a), F. 29.1.74. Sire, Muscadin Apollo. Dam, Burtenashan Katie-Lou. Breeder, Mrs. P. Wallis. Also in Classes 270, 271, 301, 319, 328.

**Class 242.—CREAM BURMESE (3-9 months), M. or F. Mrs. Somers**

- 2 562 Mr. E. J. Allen, LINLINKYE CREAM CAMELIA (27f), F. 12.3.74. Sire, Ch. Berdoma Romulus. Dam, Ch. Linlinkye Cream Candida. Breeder, Mrs. R. Warren-Hurlock. Also in Classes 271, 280, 285, 302, 326, 338.
- R 563 Mrs. C. McPhee, SANFRAN VANILLA FUDGE (27f), F. 20.3.74. Sire, Ch. Kupro Cream Amigo. Dam, Dorcas Tippy Tails. Breeder, Exhibitor. Also in Classes 267, 302, 319, 357.
- a 564 Mrs. C. Betts, KASIMIR CREAM ASTREA (27f), F. 8.4.74. Sire, Ch. Kupro Cream Amigo. Dam, Linlinkye Cream Chimo. Breeder, Mrs. A. Goodrich. Also in Classes 267, 268, 285, 365.
- a 565 Mrs. J. Dell, KUPRO CREAM CORALINE (27f), F. 22.4.74. Sire, Ch. Kupro Cream Rama. Dam, Kupro Cream Coral. Breeder, Exhibitor. Also in Classes 302, 338.
- 2 566 Mrs. H. J. Hewitt, BRAESIDE GOLDEN PROMISE (27f), M. 7.2.74. Sire, Ch. Kupro Cream Rama. Dam, Pussinboots Bambino. Breeder, Exhibitor. Also in Classes 268, 272, 302.
- 1 567 Mrs. V. Kilby, SILKPAWS HONEYBEE (27f), F. 25.5.74. Sire, Cavcots Creighton. Dam, Melanin Blaze. Breeder, Exhibitor. Also in Classes 268, 302, 380.

**Class 243.—A.O.C. BURMESE (3-6 months), M. or F.**

- 3 573 Mrs. R. M. Pocock, PUSSINBOOTS SILVASAND (27g), F. 21.4.74. Sire, Ch. Buskins Blue Sunya. Dam, Pussinboots Valldara. Breeder, Exhibitor. Also in Classes 267, 272.
- 578 Mr. and Mrs. Caldicott, RAMREE CHUCHU MERJAN (27c), M. 12.5.74. Sire, Primsu Golden Aquila. Dam, Moorings Feinics Beag. Breeder, Exhibitor. Also in Classes 270, 302.



# Sontew Siamese

REPRESENTED HERE TODAY

## Sontew Feritala (1 C.C.)

C.P., born 16.7.73

(Gr. Ch. Topsun, S.P. x Alsaga Soroya, S.P.)

and promising younger brother

## Sontew Barnabus, S.P.

born 1.3.74

---

We are looking forward in September to a further happy, healthy and successful litter from the above mating, also from our delightful Tabby-Point daughter of Ch. Sontew Amaranthus

## PAPAYA SAMANTHA

and her handsome Blue-Point husband

## TAMRUAT BLUE LANCER (2 C.C.'s)

---

Enquiries and callers welcome :

MR. and MRS. B. NIBLETT

Sontew, 21 Gypsy Lane, Great Amwell, Nr. Ware  
Herts.

Tel.: WARE 870153

- a 579 Mr. and Mrs. Caldicott, RAMREE MEIRA PERMAISURI (27j), F. 12.5.74. Sire, Primsu Golden Aquila. Dam, Moorings Feinics Beag. Breeder, Exhibitor.  
Also in Classes 268, 302.
- 580 Mr. and Mrs. Caldicott, RAMREE PENDUA BERBATU (27b), M. 12.5.74. Sire, Primsu Golden Aquila. Moorings Feinics Beag. Breeder, Exhibitor.  
Also in Classes 272, 302.
- hc 581 Miss J. M. Cunningham, BOJANGLES LILAC FAIRY (27c), F. 6.6.74. Sire, Kernow Lilac Kerconnao. Dam, Ch. Kernow Blue Kariba. Breeder, Exhibitor.  
Also in Classes 272, 302.
- 582 Miss J. M. Cunningham, BOJANGLES LILAC DOMINO (27c), M. 6.6.74. Sire, Kernow Lilac Kerconnao. Dam, Ch. Kernow Blue Kariba. Breeder, Exhibitor.  
Also in Classes 272, 302.
- 583 Mrs. S. Donnaby, NAMPARRA KAMIENNA (27c), F. 11.5.74. Sire, Typha Ahmed Beauty. Dam, Belcanto Princess Czardas. Breeder, Exhibitor.  
Also in Classes 270, 272, 302.
- 4 585 Miss S. Harbridge, TSA SATTVA (27b), F. 28.5.74. Sire, Ch. Cragland Blue Diamond. Dam, Tsa Edwina. Breeder, Exhibitor.  
Also in Classes 302, 335.
- 586 Miss S. Harbridge, TSA SHENSI (27b), F. 28.5.74. Sire, Ch. Cragland Blue Diamond. Dam, Tsa Edwina. Breeder, Exhibitor.  
Also in Classes 302, 335.
- 2 587 Mrs. L. J. Harris, SOLERA LADY GLENCORA (27e), F. 13.3.74. Sire, Ch. Kupro Cream Rama. Dam, Dorcas Brown Amber. Breeder, Exhibitor.  
Also in Classes 272, 302.
- 588 Mrs. L. J. Harris, SOLERA SAMANTHA (27g), F. 13.3.74. Sire, Ch. Kupro Cream Rama. Dam, Dorcas Brown Amber. Breeder, Exhibitor.  
Also in Classes 270, 302.
- 589 Mrs. A. Johnston, KATOLI CREAM CHERI (27c), F. 13.5.74. Sire, Aybo Buddha. Dam, Arolan Suki Katanya. Breeder, Exhibitor.  
Also in Classes 285, 302.
- 1 590 Mrs. V. Kilby, SILKPAWS GOLDEN SUNSHINE (27d), F. 25.5.74. Sire, Cavcots Creighton. Dam, Melanin Blaze. Breeder, Exhibitor.  
Also in Classes 267, 302, 380.
- 593 Mrs. M. Paxman, JAMMIE DODGER (27d), M. 21.5.74. Sire, Belcanto Julius Caesar. Dam, Dawn Danyana. Breeder, Exhibitor.  
Also in Classes 267, 268, 271, 272, 302.
- 595 Misses M. R. Silverman and M. K. Swift, SABRA HONEYFUDGE (27d), M. 27.5.74. Sire, Kernow Blue Rocket. Dam, Kernow Honeysuckle Lu. Breeders, Exhibitors.  
Also in Classes 267, 270, 302.
- a 596 Misses M. R. Silverman and M. K. Swift, SABRA HONEY BEAR (27b), M. 27.5.74. Sire, Kernow Blue Rocket. Dam, Kernow Honeysuckle Lu. Breeders, Exhibitors.  
Also in Classes 267, 270, 302.
- a 597 Miss J. J. H. Edwards, SINBAD (27d), M. 11.4.74. Sire, Soondar Mooni. Dam, Pussinboots Tangerine. Breeder, Mrs. R. Bowden.  
Also in Classes 267, 268.

**Class 243a.—A.O.C. BURMESE (6-9 months).**

Mrs. Van Winsen

- 568 Mrs. W. E. R. Hardy, DINHAM FRASQUITA (27c), F. 23.12.73. Sire, Kernow Lilac Kerconnao. Dam, Dinham Bianca. Breeder, Mrs. M. Laurent.  
Also in Classes 270, 271, 302, 319.
- 569 Mrs. D. F. Hayes, KABOOBI AMETHYST (27c), F. 21.1.74. Sire, Typha Ahmed Beauty. Dam, Iluskass Iniscara. Breeder, Exhibitor.  
Also in Classes 285, 302, 326, 328, 365, 375.
- R 570 Mrs. D. F. Hayes, KABOOBI ANGELIQUE (27b), F. 21.1.74. Sire, Typha Ahmed Beauty. Dam, Iluskass Iniscara. Breeder, Exhibitor.  
Also in Classes 285, 302, 326, 328, 365, 375.
- 571 Mrs. M. C. Laurent, DINHAM FLORA (27c), F. 23.12.73. Sire, Kernow Lilac Kerconnao. Dam, Dinham Bianca. Breeder, Exhibitor.  
Also in Classes 270, 361.

# **SILSILA**

## **Siamese and Birmans**

Represented today by  
**SILSILA LAPIZ LAZULI**

B.P.  
and

**RAMONDA BLUE  
HYACINTH**

B.P.

On exhibition :

### **TABBY-POINTED SIAMESE KITTENS**

Sire: Ch. Taurus Kountry Boy, B.P.  
Dam: Marrondon Muskette, T.P.  
All are for sale to loving homes

### **CH. PITAPAT FIRECREST**

R.P.

and

### **MARRONDON TIYE**

L.P.

have two daughters and three sons  
born on July 23rd

More Birman kittens from  
**ARBABI MELINDA and  
DEARING BOY SIOUX**

hoped for later this year

Enquiries welcome :

**Mrs. C. A. Bowyer**

**THE TINDERBOX KENNELS  
CODDINGTON, NEWARK  
NOTTINGHAM**

Tel.: Fenton Claypole 325

# **CHEZANNE**

## **Siamese Chinchillas and Colourpoint Persians**

Represented today by  
**SILSILA ANCHUSA**

B.P. SIAMESE

### **COLOURPOINT PERSIAN KITTENS**

due on August 3rd from our Best  
of Breed winner, Rubiyat Athena,  
Blue Colourpoint, by the outstand-  
ing Ch. Mandarin Adrian, Seal  
Colourpoint

### **SILSILA MITSOUKO**

Seal Tabby-Point Siamese, will  
shortly be visiting Gr. Ch. Kaloke  
Pharaoh, Seal-Point.

Enquiries for show quality kittens  
with exceptional temperaments  
welcome :

**Mrs. A. Brades**

**12 SCHOOL LANE, BELTON  
LOUGHBOROUGH  
LEICESTERSHIRE**

Tel.: Osgathorpe 547

- 1 572 Mrs. R. M. Pocock, KEVITOR BROWN KELOWNA (27e), F. 13.2.74. Sire, Ch. Farsnet Felix. Dam, Arusha Canela. Breeder, Mrs. M. H. Somers. Also in Classes 270, 302.
- 574 Dr. and Mrs. J. H. Roger, BELCANTO TITANIA (27b), F. 15.1.74. Sire, Ch. Belcanto Don Pasquale. Dam, Jo-dees Belcanto Norma. Breeder, Miss M. Mack. Also in Classes 270, 302, 357, 365.
- VXL 575 Mrs. B. Stapleton, TANTABIN MIRANDA (27e), F. 31.1.74. Sire, Kupro Cream Rama. Dam, Sleekine Suki. Breeder, Exhibitor. Also in Classes 270, 272, 293, 302.
- 576 Miss J. E. Bannister, WYCHCAT COSIMA (27e), F. 10.1.74. Sire, Cavcots Creighton. Dam, Silverseal Petronella. Breeder, Exhibitor. Also in Classes 267, 271, 272, 302.
- 2 577 Mr. and Mrs. Caldicott, YANG TERUTAMA (27d), M. 1.3.74. Sire, Primsu Golden Aquila. Dam, Bosinver St. Tudy. Breeder, Mrs. P. McCrory. Also in Classes 268, 302.
- 4 584 Mr. K. L. Everett, JAVENO LILAC GAYLORD (27c), M. 14.12.73. Sire, Montanha Seixa. Dam, Javeno Amethystina. Breeder, Mrs. J. Avery. Also in Classes 293, 302.
- 591 Mrs. L. Law, KERNOW LILAC PASTEL (27c), F. 1.1.74. Sire, Kernow Lilac Kerconnao. Dam, Kernow Khudiram. Breeder, Mrs. P. Evely. Also in Classes 268, 302, 361.
- 3 592 Miss M. Mack, BELCANTO IVANHOE (27b), M. 15.1.74. Sire, Ch. Belcanto Don Pasquale. Dam, Jo-dees Belcanto Norma. Breeder, Exhibitor. Also in Classes 272, 302, 361.
- 594 Mr. M. Sklader, AROLAN KERKANDANO (27b), M. 8.12.73. Sire, Kernow Kano. Dam, Kernow Kute Kandy. Breeder, Exhibitor. Also in Classes 268, 361.

**Class 244.—HAVANA (3-9 months), M. or F.**

**Mrs. Lauder**

- 2 598 Mr. A. R. Finn, PHAEON PHROOTYTOOTY (29), F. 19.2.74. Sire, Ch. Southview Duakylin. Dam, Southview Duaha. Breeder, Exhibitor. Also in Classes 270, 271, 272, 293.
- 1 Bx 599 Miss M. Hathaway, CIARELLA SUCHARD (29), F. 30.3.74. Sire, Ch. Quintral Pirata. Dam, Solitaire Kula. Breeder, Exhibitor. Also in Classes 267, 313.
- a 600 Mr. A. Smith, CONTENTED CARMEN (29), F. 9.3.74. Sire, Contented Kola. Dam, Zamaazi Marie Celeste. Breeder, Miss I. Wiseman. Also in Classes 267, 268.

**Class 245.—FOREIGN LILAC (3-9 months), M. or F.**

**Mrs. Lauder**

- a 601 Miss M. M. Gamble, BURDACH BOMBE SOPHIA (29c), F. 24.3.74. Sire, Burdach Naatiffe. Dam, Burdach Hreba. Breeder, Mrs. V. Gane. Also in Classes 267, 268, 285, 373.
- WML 602 Mrs. B. C. Greig, SOLITAIRE GUILIA (29c), F. 15.5.74. Sire, Daibarra Tici. Dam, Solitaire Ling. Breeder, Mrs. A. Sayer. Also in Classes 267, 271.
- 1 BOS 603 Mr. R. Hibbs, DAKSIA SUPAY (29c), F. 3.5.74. Sire, Siavana Hauteur. Dam, Siavana Gigi. Breeder, Exhibitor. Also in Classes 268, 293.

**Class 246.—CORNISH REX (3-9 months), M.**

**Miss Woodger**

- a 604 Mrs. I. E. Sherry, SATOH SANS PAREIL (33), M. 13.5.74. Sire, Watermill Royal David. Dam, Annelida Hironnelle. Breeder, Exhibitor. Also in Classes 270, 307.

**Class 247.—CORNISH REX (3-9 months), F.**

**Miss Woodger**

- a 605 Mrs. M. John, HEPHZIBAH JEZEBEL (33), F. 13.5.74. Sire, Watermill New Penny. Dam, Hephzibah Fair Ophelia. Breeder, Exhibitor. Also in Classes 272, 307, 350.
- 3 606 Mr. F. B. Patient, CRAMAR CHARLENE (33), F. 9.1.74. Sire, Ch. Senty-Twix Jaspas. Dam, Josephina Jo Jo. Breeder, Mrs. J. Treanor. Also in Classes 267, 268.

# CYMBELINE SEAL - POINT SIAMESE

At Stud to a few approved queens, young elegant Male of superb type

## Gr. Ch. Cymbeline Sans Pareil

Best Siamese Exhibit at Three Counties Cat Society Ch. Show, 1973  
Best Siamese Adult and Best of Breed at Herts. and Middlesex Ch. Cat Club Show, 1973

Best Siamese Adult and Best Siamese Exhibit at West of England and S.W. Cat Club Ch. Show, 1973. Best of Breed at the National Cat Club Ch. Show, 1973

Also welcome to

## Penyrallt Picasso

Sire: Killdown Beauregard. Dam: Cymbeline Katishe  
to the "Cymbeline" tribe

Kitten and stud enquiries :

**MRS. TATJANA FOLKES**

**"Cymbeline" - 46 Elmbridge Road - Gloucester**

Tel.: Gloucester 27203

# RANTREE SIAMESE

BASILDON - ESSEX

## CHAMPION STOCK

Seal and Chocolate-Point, Lilac and Blue-Point Kittens usually available. Registered, inoculated, suitable for showing, breeding or as most adorable pets

AT STUD :

## Champion Rantree Sawat

5 C.C.'s      2 G.C.C.'s      FEE £7

**MR. and MRS. TUCKER**

**95 Rantree Fold - Basildon - Essex SS16 5TP**

Basildon 25138

- 1 607 Mrs. S. Luxford-Watts, ZUREIQA TAFFETA (33), F. 10.5.74. Sire, Ch. Senty-Twix Jasper. Dam, Du-Bu Cinderella. Breeder, Mrs. R. W. Hamilton. Also in Classes 267, 268, 269, 271.
- h 608 Mrs. B. Dixon, MARINA MORELLA (33), F. 7.6.74. Sire, Marina Mystic. Dam, Marina Hija. Breeder, Exhibitor. Also in Classes 307, 335, 350, 380.
- a 609 Mrs. B. Dixon, MARINA MARSCALA (33), F. 7.6.74. Sire, Marina Mystic. Dam, Marina Hija. Breeder, Exhibitor. Also in Classes 307, 313, 350, 361.
- a 610 Mrs. J. and Master R. Maries, LOHTEYN BEE ORCHIS (33), F. 21.12.73. Sire, Lohteyn Merlimau Pegoh. Dam, Lohteyn Palawan Peacock. Breeder, Mrs. L. Heath. Also in Classes 307, 328.
- a 611 Mrs. J. and Master R. Maries, JAROMA TAN (33), F. 7.4.74. Sire, Lohteyn Si-Red. Dam, Jaroma Vanda. Breeder, Exhibitor. Also in Classes 272, 307.
- 2 612 Mrs. J. and Master R. Maries, JAROMA BENG (33), F. 7.4.74. Sire, Lohteyn Si-Red. Dam, Jaroma Vanda. Breeder, Exhibitor. Also in Classes 272, 307.

**Class 248.—DEVON REX (3-9 months), M.**

**Mrs. Shrouder**

- Vh 613 Mrs. D. Banfield, REDCLIFFE SPARKLE (33a), M. 13.3.74. Sire, Redcliffe Silver Ribbons. Dam, Ch. Berilleon Princess Pixie. Breeder, Exhibitor. Also in Classes 267, 352, 365.
- 2 614 Mrs. D. Banfield, REDCLIFFE TWINKLE (33a), M. 13.3.74. Sire, Redcliffe Silver Ribbons. Dam, Ch. Berilleon Princess Pixie. Breeder, Exhibitor. Also in Classes 267, 352, 365.
- 3 615 Mrs. P. Benn, JOYSTAR LILAC BOY (33a), M. 3.4.74. Sire, Hadrian Blue Vulcan. Dam, Sayonara Pixie Blue. Breeder, Miss J. Dale. Also in Classes 269, 352.
- h 616 Mrs. I. Loveys, ROCKLO WRESTLER (33a), M. 1.5.74. Sire, Sunbronze Holysmoke. Dam, Berilleon Emma. Breeder, Exhibitor. Also in Classes 309, 352.
- R 617 Mrs. I. Loveys, ROCKLO WELLCOME (33a), M. 1.5.74. Sire, Sunbronze Holysmoke. Dam, Berilleon Emma. Breeder, Exhibitor. Also in Classes 309, 352.
- h 618 Mrs. B. C. Slawson, ECLIPSE SESOM (33a), M. 6.6.74. Sire, Brylou Jasper. Dam, Skippa. Breeder, Exhibitor. Also in Classes 267, 268, 325, 352.
- 1 619 Mrs. G. Worthy, MIRIMAR ASMODEUS (33a), M. 3.2.74. Sire, Amharic Coeur De Lion. Dam, Ch. Marisarni Voodoo. Breeder, Mrs. M. Finnegan. Also in Classes 285, 309, 319.

**Class 249.—DEVON REX (3-9 months), F.**

**Mrs. Shrouder**

- Vh 620 Miss J. Dale, JOYSTAR MISS SHEONA (33a), F. 3.4.74. Sire, Hadrian Blue Vulcan. Dam, Sayonara Pixie Blue. Breeder, Exhibitor. Also in Classes 268, 269, 352.
- 3 621 Mrs. R. M. Farquharson, HATCHGATE NUTMEG (33a), F. 30.3.74. Sire, Berilleon Crackles. Dam, Hatchgate Toffee. Breeder, Exhibitor. Also in Classes 267, 268, 269, 272, 309.
- 2h 623 Mrs. B. C. Slawson, ECLIPSE PAPILLON (33a), F. 6.6.74. Sire, Brylou Jasper. Dam, Briestonhill Olivia. Breeder, Exhibitor. Also in Classes 267, 268, 325, 352.
- R 624 Mrs. and Miss Cook, DENKA MAGIC POTION (33a), F. 17.5.74. Sire, Denka Hocus Pocus. Dam, Hatchgate Sahara. Breeder, Exhibitor. Also in Classes 268, 272, 309.
- 1 625 Mrs. A. Mackenzie, FLEURDELYS CAPRICE (33a), F. 26.1.74. Sire, Ch. Hadrian Blue Vulcan. Dam, Amharic Stardust Sorbet. Breeder, Exhibitor. Also in Classes 293, 309, 319.

**Class 250.—A.O.V. (BREED 26) (3-9 months), M. or F.**

**Mrs. Shrouder**

- C 626 Mrs. C. E. Eldridge, SOLITAIRE CHRISTANA (26), F. 6.4.74. Sire, Muchloved Tawny Tiger. Dam, Solitaire Bathsheba. Breeder, Mrs. A. Sayer. Also in Classes 273, 328, 366.

# PET'S CORNER

11a The Pantiles  
Bexley Heath, Kent

Tel.: ERITH 38809

---

**We carry the widest range of Fresh Meat, packed and frozen on our premises**

Stockists of Dofos, Canine and Bellboy Products

---

**MAIN DISTRIBUTORS FOR SPRATTS COMPLETE CAT FOOD**

**BULK CAT LITTER in 28 lb. packs 90p  
£3 per cwt.**

HORSE CHEEK	....	....	....	<b>25p</b>
MINCED CHICKEN	....	....	....	<b>18p</b>
TURKEY BRAWN	....	....	....	<b>18p</b>
MINCED RABBIT	....	....	....	<b>24p</b>
MINCED TURKEY	....	....	....	<b>18p</b>
MINCED FISH	....	....	....	<b>18p</b>
HEART	....	....	....	<b>28p</b>
LIVER	....	....	....	<b>26p</b>

10% discount on 40 lb. orders

---

**FREE DELIVERY WITHIN 10-MILE RADIUS**

---

**We are open six days a week 9 a.m.—6 p.m.  
Early closing Thursday**

**NO PARKING RESTRICTIONS**

Full price list available on request

- 627 Mrs. V. Gane, BURDACH CEPI (26), F. 1.5.74. Sire, Burdach Naatiffe. Dam, Burdach Muffin. Breeder, Exhibitor.  
 Also in Classes 273, 358.
- 628 Miss M. Hathaway, CIARELLA COPPERNOVA (26), M. 17.4.74. Sire, Ciarella Manikin. Dam, Iluskass Renata. Breeder, Exhibitor.  
 Also in Classes 273, 370.
- 629 Mr. and Mrs. D. A. L. McAllister, KALAYA BLACK CREOLE (26), M. 2.5.74. Sire, Sislinki Tamil. Dam, Solitaire Blackcap. Breeder, Exhibitor.  
 Also in Classes 273, 370.
- 630 Mr. and Mrs. D. A. L. McAllister, KALAYA BLACK ROMANY (26), F. 2.5.74. Sire, Sislinki Tamil. Dam, Solitaire Blackcap. Breeder, Exhibitor.  
 Also in Classes 273, 366.
- 631 Mrs. P. A. Randall, TOLTEC TEARAWAY (26), M. 22.2.74. Sire, Ch. Zils Zeno. Dam, Rhapsody In Blue. Breeder, Exhibitor.  
 Also in Classes 286, 366, 370.
- 632 Mrs. A. E. Winkworth, SELEMAT GAJAH (26), M. 16.1.74. Sire, Ch. Tibaan Foetious. Dam, Selemat Siriam. Breeder, Exhibitor.  
 Also in Classes 273, 286.
- 633 Mrs. C. Walker, KARJYM SILVER SAPPHIRE (26), F. 4.4.74. Sire, Ch. Tamarack Topal. Dam, Della Moondrop. Breeder, Exhibitor.  
 Also in Class 273.
- 634 Mrs. P. V. Perrin, LAWKAT THOMAS (26), M. 13.2.74. Sire, Safari Don Quixote. Dam, Ambercloud Minerva. Breeder, Mrs. L. Law.  
 Also in Classes 273, 286.

**Class 250a.—CANCELLED. NO ENTRIES.**

**FOREIGN NEUTERS—OPEN CLASSES**

**Class 251.—PREMIER OF PREMIERS.**

**Mrs. Thake**

- 636 Mrs. S. V. O. Davies, PR. ADWALTON ANEGUS (33a), M.N. 27.7.71. Sire, Ch. Hesperian Minotaur. Dam, Ch. Saharam Cantlia. Breeder, Mrs. J. Cartwright.  
 Also in Classes 255, 275, 310, 353.
- 637 Mrs. S. E. Gunning, PR. BUSKINS MENG (27), M.N. 3.10.71. Sire, Tapawingo Tsimshian. Dam, Buskins Blue Kotan. Breeder, Mrs. F. E. Horne.  
 Also in Classes 253, 275, 278.
- 638 Mr. and Mrs. J. Green, PR. ARTEMIS MERCURY (27a), M.N. 11.4.73. Sire, Ch. Jingpaws Blue Monarch. Dam, Pikko Silver Lady. Breeder, Exhibitor.  
 Also in Classes 254, 275, 278, 303, 317, 320, 329.
- 639 Mrs. G. A. Hilleard, PR. ELAN LYSANDER (33), M.N. 3.9.68. Sire, Oakhill Albert Apricot. Dam, Annelida Black Tulip. Breeder, Exhibitor.  
 Also in Classes 288, 329, 339, 353.
- 640 Misses M. R. Silverman and M. K. Swift, PR. BASTET SABRA BLUE-ROSE (27a), F.N. 13.5.69. Sire, Ch. Bahkta Pilot. Dam, Sabra Silvasue. Breeder, Mr. D. Morton.  
 Also in Classes 276, 304.
- 641 Mrs. F. E. Williams, PR. MOORINGS BLONDI REGULUS (27a), M.N. 29.7.71. Sire, Silverseal Torquil. Dam, Ramree Ahminah. Breeder, Exhibitor.  
 Also in Classes 254, 278, 281, 288, 303, 327.
- 642 Miss V. J. Huthwaite, PR. SEATHWAITE BAMBOO BOY (27), M.N. 4.8.67. Sire, Ch. Buskins Blue Sunya. Dam, Pussinboots Patience. Breeder, Exhibitor.  
 Also in Classes 275, 278, 303.

**Class 252.—A.V. FOREIGN NEUTER (ex. BURMESE and REX).**

**Mrs. Lauder**

- 643 Miss S. Tonkin, PRINDOS SOF OMAR (23a), M.N. 2.9.73. Sire, Prindos Zor Balu. Dam, Ch. Prindos Chika. Breeder, Mrs. M. K. Kidd.  
 Also in Classes 274, 275, 277, 292a.
- 644 Mrs. F. Wasdell, SOLITAIRE KAMUELA (29), F.N. 10.3.73. Sire, Ch. Dandycat Zulu Warrior. Dam, Ch. Dandycat Hula Dancer. Breeder, Mrs. A. Sayer.  
 Also in Classes 275, 276, 277.

# BEAUMARIS SIAMESE

AT STUD :

## **Champion Reoky Pedro (32)**

Handsome Chocolate Tabby-Pointed son of  
Grand Champion Seremban Liger

QUEENS :

**Changlung Katinka (24)**

**Beaumaris Arabella (24)**

---

Well-bred Beaumaris kittens sometimes available to loving  
homes only

---

Enquiries :

**MRS. ANNE GREGORY**

**37 Wilmington Way, Gillingham, Kent ME8 6JB**

Telephone : MEDWAY 361645

- 2 645 Mrs. G. Carney, SIAVANA HABLEUR (29), M.N. 1.7.73. Sire, Ch. Southview Duakylin. Dam, Ceedee-em Caromelle. Breeders, Mr. and Mrs. W. S. view Duakylin. Dam, Ceedee-em Cardmelle. Breeders, Mr. and Mrs. W. S. Clayton.  
Also in Classes 274, 275, 277, 281.
- 3 646 Master M. Kaye, GEMSTONE COSSACK (16a), M.N. 1.11.72. Sire, Ch. Broadweir Tamaroff. Dam, Broadweir Salamander. Breeder, Mrs. A. Millman.  
Also in Classes 274, 275, 288, 314.
- 1 pr 647 Mrs. J. R. Flowers, CHITA JASKA (23), M.N. 20.3.73. Sire, Ch. Albyn Justin. Dam, Eigerfell Nana. Breeder, Mrs. N. Young.  
Also in Classes 274, 275, 288, 292, 367.

**Class 253.—BROWN BURMESE NEUTER.**

**Mrs. Van Winsen**

- a 637 Mrs. S. E. Gunning, PR. BUSKINS MENG (27), M.N. See Class 251.
- 648 Mrs. M. A. Roger, KATHAKALI ROBERTO (27), M.N. 4.8.72. Sire, Ch. Soondar Mooni. Dam, Boronga Kathi. Breeder, Mrs. J. M. P. Wilkinson.  
Also in Classes 278, 303, 329, 359, 367.
- 4 649 Mrs. B. Stapleton, TANTABIN ALFRESCO (27), M.N. 19.8.72. Sire, Cragland Toola. Dam, Sleekine Suki. Breeder, Exhibitor.  
Also in Classes 278, 294, 303.
- 3 650 Miss J. P. Watkins, SINSAIDH (27), F.N. 7.6.73. Sire, Kevitor Brown Tiger. Dam, Sudtrie Sahara. Breeder, Mrs. M. E. Kidd.  
Also in Classes 274, 275, 276, 278, 294, 304.
- R 651 Miss J. M. Cunningham, BOJANGLES THUMBELINA (27), F.N. 30.5.72. Sire, Kiang Khedive. Dam, Bojangles Tiddlywink. Breeder, Exhibitor.  
Also in Classes 274, 275, 276, 278, 304, 339.
- 1 pr 652 Mrs. S. M. Essame, BELCANTO DIE FLEDERMAUS (27), M.N. 24.10.72. Sire, Belcanto Graf Vonluxenburg. Dam, Ch. Belcanto Daphne. Breeder, Miss M. Mack.  
Also in Classes 277, 278, 303.
- 653 Miss Q. G. Hinksman, ALOS CORIN (27), M.N. 31.10.72. Sire, Ch. Dinham George. Dam, Ch. Allos Lysandra. Breeder, Miss B. Haig.  
Also in Classes 274, 278, 303.
- 654 Mrs. K. O. Martin, MANTHIERRY ZENO (27), M.N. 19.6.73. Sire, Ch. Dinham George. Dam, Huntina Girly. Breeder, Mrs. Y. Bruckel.  
Also in Classes 274, 275, 277, 278, 303, 378.
- a 655 Mrs. G. Richards, PARADIMA KAF DJINNI (27), M.N. 2.3.73. Sire, Ch. Tapawingo Tahltan. Dam, Montanha Blue Zyra. Breeder, Mrs. J. Seville.  
Also in Classes 274, 275, 278, 303.
- 656 Miss A. M. Staff, BUOALIN TITUS (27), M.N. 7.3.73. Sire, Kalos Phrixus. Dam, Buskins Tien. Breeder, Mr. N. Hutchinson.  
Also in Classes 278, 320.
- a 657 Mrs. J. Tanner, KHALIN GREAT AZAK (27), M.N. 1.8.72. Sire, Kernow Kosack. Dam, Kernow Konka. Breeder, Mrs. P. A. Sinden.  
Also in Classes 274, 275, 278, 303, 329.
- a 658 Mr. A. Fullwood, MONTANHA ROUGE AUTUMN (27), M.N. 8.10.73. Sire, Ch. Dinham George. Dam, Montanha Silver Sonja. Breeder, Mrs. J. A. Osborne.  
Also in Classes 278, 329, 303.
- 2 659 Mrs. M. Weller, BEECEES KOYANA (27), F.N. 17.9.73. Sire, Ch. Tapawingo Tagish. Dam, Mying Yan Romaine. Breeder, Mrs. Z. Thompson.  
Also in Classes 274, 276, 278.

**Class 254.—BLUE AND CREAM BURMESE NEUTER.**

**Mrs. Waldo-Lamb**

- 2 638 Mr. and Mrs. J. Green, PR. ARTEMIS MERCURY (27a), M.N.  
See Class 251.
- 3 641 Msr. F. E. Williams, PR. MOORINGS BLONDI REGULUS (27a), M.N.  
See Class 251.
- 660 Mrs. Y. Bruckel, MANTHIERRY BLEU BELOISE (27a), M.N. 19.6.73. Sire, Ch. Dinham George. Dam, Huntina Girly. Breeder, Exhibitor.  
Also in Classes 274, 278, 303, 378.
- a 661 Miss H. E. Cottrell, DORCAS BLUE BARON (27a), M.N. 11.4.73. Sire, Kupro Cream Rama. Dam, Dorcas Blue Dawn. Breeder, Mrs. P. D. Baron.  
Also in Classes 274, 275, 278, 303.

# **BARNOWL**

## **SIAMESE AND BURMESE**

ON SHOW TODAY

### **Brymar Alkaid (24a)**

Ch. Sovereign Lilac Lance (24c) x Nikaed Alexandra (24a)

This boy will be at stud later this year

---

Brown Burmese kittens available now from  
Ladyfield Dusty Sim (27) x Ch. Silkpaws Blue Smoke (27a)

Siamese kittens available from  
Brymar Aquila (24a) x Ch. Sovereign Lilac Lance  
and  
Priorsgate Soulangiana (32b) x Ch. Boidheach MacGille (24b)

Enquiries to :

**MR. and MRS. A. SAWKINS**  
Shamrock House - Hinton - Nr. Berkeley - Glos.  
Tel.: SHARPNESS 276

## **MAEBON SIAMESE**

hope to have kittens later this year from their queens

### **Physalis Pitty Sing, S.P.**

and her daughter

### **Maebon Mimosa, C.P.**

---

**MARGARET and ELSWORTH BRISTOW**  
35 Rochford Road - Bishops Stortford  
Hertfordshire CM23 5ET  
BISHOPS STORTFORD 53519

- R 662 Mr. K. L. Everett, BORONGA SILVA SITA (27a), F.N. 12.6.71. Sire, Ch. Freefolk Blue Buoy. Dam, Boronga Blue Annapurna. Breeder, Mrs. P. Impson.  
 Also in Classes 276, 304.  
 1Pw 663 Mrs. A. Fullwood, LINLINKYE CREAM CONDARBARR (27f), M.N. 19.3.73. Sire, Ch. Kupro Cream Rama. Dam, Kupro Cream Chinchona. Breeder, Mrs. R. Warren-Hurlock.  
 Also in Classes 278, 303, 314.

**Class 255.—DEVON REX AND CORNISH REX NEUTER. Mrs. Shrouder**

- C 636 Mrs. S. V. O. Davies, PR. ADWALTON ANEGUS (33a), M. See Class 251.  
 664 Miss M. V. Chitty, PIKKO MORNINGSTAR (33), M.N. 15.7.71. Sire, Ch. Elan Ali Baba. Dam, Pikko Stardust. Breeder, Miss B. Stock.  
 Also in Classes 274, 275, 288, 353.  
 665 Miss M. V. Chitty, PIKKO SWEET SERAPHINA (33), F.N. 24.4.72. Sire, Ch. Elan Ali Baba. Dam, Pikko Stardust. Breeder, Miss B. Stock.  
 Also in Classes 274, 275, 276, 288, 353.  
 H L 666 Mrs. D. J. Wasdell, HEPHZIBAH BINDU (33), F.N. 19.9.72. Sire, Ch. Masambula. Dam, Lohteyn White Royette. Breeder, Mrs. M. John.  
 Also in Classes 275, 276, 277.  
 R 667 Mr. and Mrs. R. W. Gee, LUCINDA LESTER LAD (33a), M.N. 17.11.73. Sire, Ch. Romid Canasta. Dam, Ch. Redcliffe Snowqueen. Breeder, Exhibitor.  
 Also in Classes 274, 277, 310, 320, 353.  
 668 Mrs. R. Gray, ZUREIQA TYBERT (33), M.N. 2.8.71. Sire, Senty-Twix Crisparis. Dam, Ch. Belhaven Topaz. Breeder, Mrs. H. Hamilton.  
 Also in Classes 274, 310.  
 669 Mrs. R. Gray, ARAGORN RUDIGAR BAGGINS (33a), M.N. 1.6.71. Sire, Sahreen Snow-Wonder. Dam, Gogmagog Sea Lavender. Breeder, Mrs. Blakemore.  
 Also in Classes 274, 310.  
 VHC 670 Mrs. G. A. Hilleard, CH. ELAN LORD NELSON (33), M.N. 16.3.69. Sire, Ch. Lohteyn Golden Peach. Dam, Annelida Black Tulip. Breeder, Exhibitor.  
 Also in Classes 274, 317, 362, 367.  
 671 Miss Q. G. Hinksman, MARTYCAT MR. PLOD (33), M.N. 23.3.71. Sire, Ch. Elan Lord Nelson. Dam, Ch. Patti Puss. Breeder, Miss B. Munford.  
 Also in Classes 274, 310, 353.  
 R 672 Mrs. M. John, HEPHZIBAH THANE (33), M.N. 1.2.73. Sire, Ch. Masambula. Dam, Redviva Pearly Queen. Breeder, Exhibitor.  
 Also in Classes 288, 310, 353.  
 3 673 Miss H. Robinson, KENNICOTT CORINNE (33a), F.N. 20.6.72. Sire, Sahreen Snow Wonder. Dam, Sayonara Blue Monday. Breeder, Powell.  
 Also in Classes 276, 277.  
 1Pw 674 Miss B. Stock, CH. ELAN ALI BABA (33), M.N. 3.2.70. Sire, Ch. Elan Lord Nelson. Dam, Elan Fantasia. Breeder, Mrs. G. A. Hilleard.  
 Also in Classes 275, 288, 327, 353.  
 43 675 Miss B. Stock, PIKKO WANDERING STAR (33), M.N. 24.4.72. Sire, Ch. Elan Ali Baba. Dam, Pikko Stardust. Breeder, Exhibitor.  
 Also in Classes 275, 288, 327, 353.  
 VHC 676 Miss B. Stock, ELAN PRINCE CHARMING (33), M.N. 3.3.72. Sire, Ch. Elan Ali Baba. Dam, Elan Lotus Blossom. Breeder, Mrs. G. A. Hilleard.  
 Also in Classes 275, 288, 327, 353.  
 2 677 Mrs. P. H. Wilding, CH. ELAN FOREVER AMBER (33), F.N. 10.3.71. Sire, Ch. Elan Ali Baba. Dam, Elan Fantasia. Breeder, Mrs. G. A. Hilleard.  
 Also in Classes 310, 353, 381.  
 a 678 Mrs. P. H. Wilding, ELAN DUSKY PRINCESS (33), F.N. 28.8.70. Sire, Ch. Elan Lord Nelson. Dam, Elan Fantasia. Breeder, Mrs. G. A. Hilleard.  
 Also in Classes 310, 381.  
 679 Miss B. J. Barclay, SAFFRONICUS CHANG-SHA (33a), M.N. 28.7.73. Sire, Alden Casanova. Dam, Saffronicus Chiyono. Breeder, Exhibitor.  
 Also in Classes 275, 310, 314, 353, 381.

**Class 256.—A.O.V. (BREED 26).**

**Miss Woodger**

- 1 680 Mr. and Mrs. B. Y. Saxby, NIKAED NGAI (26), M.N. 12.3.72. Sire, Ch. Herbe Slippertree. Dam, Nikaed Io. Breeder, Mrs. D. Deakin.  
 Also in Classes 279, 310, 374.

**CAT SHOW  
EQUIPMENT**

**CAT ACCESSORIES  
FRESH MEAT and OFFAL**

now available at

**TRIANGLE PET  
STORES**

**19-21a ALDERMANS HILL**

**PALMERS GREEN**

**LONDON N13**

Telephone No.: 01-886 7410

**Class 256a.—CANCELLED. NO ENTRIES.**

**Class 256b.—FOREIGN LILAC.**

- 681 Miss R. A. French, BURDACH SUMASHI JIRU (29c), M.N. 6.5.72. Sire, Burdach Naatiffe. Dam, Kalava Tazenda. Breeder, Mrs. V. Gane. Also in Classes 274, 275, 288, 294, 320, 374. Mrs. Shrouder

**MISCELLANEOUS CLASSES—S.H. ADULTS**

**Class 258.—A.V. MAIDEN CAT, M. or F.**

- 323 Mr. R. Neave, DALLIFID-KOHOUTEK (16), M. See Class 174. Mrs. Ashford  
326 Mrs. V. R. Scharde, CAPSTONE PICCOLO (16), M. See Class 174.  
330 Mrs. G. Delahaye, BONAVENTURA JAYNE (16), F. See Class 175.  
344 Mrs. J. A. Foster, BROADWEIR RHEINGOLD (17), M. See Class 184.  
413 Mrs. M. Tomlin, BRAMBLE CALYNDIA (23), F. See Class 215.  
414 Mrs. R. B. Alexander, FINISTERRE ZOSER (23a), M. See Class 216.  
424 Mrs. Q. Barker, STATIONHILL CLEOPATRA (27), F. See Class 219.  
425 Mr. and Mrs. G. Bennell, MOORINGS HONEY LOTUS (27), F. See Class 219.  
432 Mrs. A. L. Jordan, BUSKINS MATI (27), F. See Class 219.  
462 Mrs. L. J. Harris, KUPRO ARABELLA (27g), F. See Class 225.  
465 Mrs. W. M. Bland, DOLLY GRAY (27g), F. See Class 225.  
469 Miss M. Hathaway, CIARELLA MANIKIN (29), M. See Class 226.  
473 Mrs. J. Evans, CHRISTANA SAADI (29), F. See Class 27.  
475 Mrs. L. Perkins, CEEDEE-EM KAPIDLANI (29), F. See Class 227.  
481 Mrs. A. H. Watts, DU-BU MARCEL (33), M. See Class 229.  
491 Mrs. N. Wakeford, SIRAFEN CHOCOLAT SOLDIER (33a), M. See Class 231.  
493 Mr. and Mrs. R. W. Gee, COSMIC LOVING SPOONFUL (33a), M. See Class 232.

**Class 259.—A.V. DEBUTANTE CAT, M. or F.**

- 326 Mrs. V. R. Scharde, CAPSTONE PICCOLO (16), M. See Class 174. Mrs. Genty  
332 Mrs. W. M. Bland, AMBERCLOUD MIA (16), F. See Class 175.  
353 Mrs. S. M. Colvill, DELLSWOOD STELLAS FELLA (14b), M. See Class 197.  
413 Mrs. M. Tomlin, BRAMBLE CALYNDIA (23), F. See Class 215.  
414 Mrs. R. B. Alexander, FINISTERRE ZOSER (23a), M. See Class 216.  
422 Mrs. S. A. Richards, MIBUYA CINDERELLA SIWEI (27), F. See Class 219.  
424 Mrs. Q. Barker, STATIONHILL CLEOPATRA (27), F. See Class 219.  
466 Mrs. W. M. Bland, TAKAMI MUSUBI (27b), F. See Class 225.  
473 Mrs. J. Evans, CHRISTANA SAADI (29), F. See Class 227.  
475 Mrs. L. Perkins, CEEDEE-EM KAPIDLANI (29), F. See Class 227.  
480 Mrs. A. H. Watts, DU-BU SAMSON (33), M. See Class 229.  
491 Mrs. N. Wakeford, SIRAFEN CHOCOLAT SOLDIER (33a), M. See Class 231.

**Class 260.—A.V. NOVICE CAT, M. or F.**

- 318 Mrs. J. A. Foster, BROADWEIR SCARAMOUCHE (15), M. See Class 166. Mrs. Beever  
323 Mr. R. Neave, DALLIFID-KOHOUTEK (16), M. See Class 174.  
325 Mrs. L. Law, AMBERCLOUD KALUMAT (16), M. See Class 174.  
328 Miss S. Meakin, MANANA THE MOPPET (16), F. See Class 175.  
330 Mrs. G. Delahaye, BONAVENTURA JAYNE (16), F. See Class 175.  
332 Mrs. W. M. Bland, AMBERCLOUD MIA (16), F. See Class 175.  
335 Mrs. K. Protheroe, JEZREEL TROJAN (19), M. See Class 176.  
337 Mr. and Mrs. A. R. M. Clarke, SIRELI SILVER VANGUARD (18), M. See Class 180.  
400 Mrs. J. Simmons, PHILOS ATUM RA (23), M. See Class 215.  
414 Mrs. R. B. Alexander, FINISTERRE ZOSER (23a), M. See Class 216.  
424 Mrs. Q. Barker, STATIONHILL CLEOPATRA (27), F. See Class 219.  
425 Mr. and Mrs. G. Bennell, MOORINGS HONEY LOTUS (27), F. See Class 219.  
434 Mrs. J. Murphy, DOBHRAN SOLONE (27), F. See Class 219.