

- 3 259 Miss W. Edwards. HEPHAESTOS NAUTILUS (33a), M. Sire, Kaysue Seaspray. Dam, Hephaestos Greek Goddess. 22.4.73. Breeder, Mrs. Fisher.  
Also in Classes 207, 208a, 367.
- 1 260 Miss A. Oliver. MIRAMAR BEELZEBUB (33a), M. Sire, Berilleon Crackles. Dam, Marisarni Voodoo. 5.3.73. Breeder, Mrs. Finnegan.  
Also in Classes 207, 315, 367, 420.

Mrs. Hardy

Class 134.—S.P., M.

- 1 ch 261 Mrs. T. Folkes, CH. CYMBELINE SANS PAREIL (24), M. Sire, Ch. Killdown Vanguard. Dam, Ch. Dunchattan Ayshah. 12.2.72. Breeder, Exhibitor.  
315  
3 262 Mr. and Mrs. Hutton, CH. SISLINKI TOPSUN (24), M. Sire, Ch. Sislinki Topal. Dam, Karibur Jarna. 16.8.71. Breeder, Mrs. P. Neale.  
Also in Classes 149, 259, 311, 358, 369, 372, 377.
- Vnc 263 Mrs. M. I. Williams, PERTINAX (24), M. Sire, Ch. Sabukia Sirocco. Dam, Killdown Athena. 26.5.71. Breeder, Rev. P. Smith.  
Also in Classes 214, 336, 369.
- a 264 Mrs. K. Orton, KILLDOWN KHAN (24), M. Sire, Ch. Longacres Jeremy. Dam, Donna. 2.4.72. Breeder, Mrs. I. Keene.  
Also in Classes 215, 369, 413.
- HC 265 Mr. and Mrs. Maddick, SISLINKI TRINI (24), M. Sire, Ch. Sislinki Topal. Dam, Karibur Jarna. 26.12.70. Breeder, Mrs. P. Neale.  
Also in Classes 214, 346, 358, 369, 377.
- a 266 Mr. and Mrs. Furber, SATURN SENTINEL (24), M. Sire, Ch. Killdown Eros. Dam, Saturn Sabrina. 30.6.72. Breeder, Mrs. N. Farnsworth.  
Also in Classes 215, 245, 384.
- 2 267 Mrs. P. Gibbard, CORWIN KINCAID (24), M. Sire, Ch. Ubon O'Cahan. Dam, Nikaed Diane. 16.4.71. Breeder, Mrs. H. Friggens.  
Also in Classes 214, 369.
- R 268 Mrs. A. Durrant, SIANJO TIBERIUS (24), M. Sire, Ch. Longacres Jeremy. Dam, Kaloke Orsova. 23.9.72. Breeder, Exhibitor.  
Also in Classes 210, 215, 217, 294, 358, 377.
- Vnc 269 Mr. and Mrs. K. Dessauer, MAYFIELDS HASSAN (24), M. Sire, Ch. Mayfields Hermes. Dam, Tradewinds Sa-Lee. 10.5.72. Breeders, Exhibitors.  
Also in Classes 215, 358, 369, 377.

Class 135.—S.P., F.

Mrs. Wilson

- a 270 Mrs. A. Durrant, SIANJO PERFIDEA (24), F. Sire, Ch. Killdown Vanguard. Dam, Roundway Allamanda. 24.7.72. Breeder, Exhibitor.  
Also in Classes 210, 215, 358, 389.
- a 271 Mrs. P. Gibbard, KAYMENH BETH (24), F. Sire, Corwin Kincaid. Dam, Kaymenh Homers Daughter. 13.10.72. Breeder, Exhibitor.  
Also in Classes 210, 358.
- u 272 Mrs. P. Sparrey, CYMBELINE ZOE (24), F. Sire, Ch. Killdown Vanguard. Dam, Ch. Dunchattan Ayshah. 12.2.72. Breeder, Mrs. T. Folkes.  
Also in Classes 215, 369a, 384.
- 2 273 Mr. V. Athavale, CYMBELINE KATISHE (24), F. Sire, Ch. Killdown Vanguard. Dam, Ch. Dunchattan Ayshah. 8.8.72. Breeder, Mrs. T. Folkes.  
Also in Classes 215, 227, 246, 298.
- HC 274 Mrs. L. Strunin, BAYARD ADAGIO (24), F. Sire, Ch. Sislinki Topsun. Dam, Paroma Cleo. 5.6.72. Breeder, Exhibitor.  
Also in Classes 210, 215, 311, 325, 336, 369a, 372, 377.
- 3 275 Mrs. E. Gregory, SCIMITAR SEDELIA (24), F. Sire, Roundway Vallota. Dam, Roundway Davidia. 24.7.72. Breeder, Exhibitor.  
Also in Classes 210, 294.
- 2 276 Mrs. P. Armour, HUNTHAY SAPPHO (24), F. Sire, Tailong Kuiki. Dam, Lounsdale Pandora. 4.8.71. Breeders, Mrs. and Miss Kirkcaldie.  
Also in Classes 214, 217, 384, 406, 413.
- 2 277 Mrs. R. Powell, CYMBELINE ZARIA DIANE (24), F. Sire, Ch. Killdown Vanguard. Dam, Ch. Dunchattan Ayshah. 12.2.72. Breeder, Mrs. T. Folkes.  
Also in Classes 215, 217, 363a, 369.
- 278 Mr. R. Berridge, KAYMENH BIANCA (24), F. Sire, Corwin Kincaid. Dam, Kaymenh Grette. 31.9.72. Breeder, Mrs. V. Gibbard.  
Also in Classes 215, 217, 306.

# DEWPOINT BURMESE

AT STUD :

**Ch. Kalos Castor (27)**

carrying Blue

Sire, Ch. Tapawingo Tahltan. Dam, Ch. Kalos Blue Aedon

**Breeder : MRS. J. HANCE**

Five times Best in Show.

“Cassy” has now retired from the show bench and is siring Best of Breed, strong, healthy kittens, some of which will be on show today.

Approved Queens (accompanied preferred), given every care and understanding in heated quarters.

---

Enquiries :

**MRS. M. GILES**

**Birch House - Staplehay**

**Taunton - Somerset**

Tel.: TAUNTON 2822

- 279 Mrs. J. Bunch, EDELWEISS SELENA (24), F. Sire, Edelweiss Nimbus. Dam, Snevets Zhililia. 30.5.72. Breeder, Miss J. Hill.  
Also in Classes 215, 217, 330.
- 4 279a Mrs. M. Key, KALOKE GISELLE (24), F. Sire, Ch. Sabukia Sirocco. Dam, Cymbeline Chemel. 18.10.72. Breeder, Exhibitor.  
Also in Classes 210, 214.

Mrs. Towe

Class 136.—B.P., M.

- 1 W 280 Miss D. Frecker, ZEUS GALANTHUS (24a), M. Sire, Careyvale Cantata. Dam, Zeus Azalea. 7.6.70. Breeder, Exhibitor.  
Also in Classes 214, 384.
- 2 281 Mrs. M. Williams, QUILA CALEBAN (24a), M. Sire, Trubun Pedro. Dam, Quila Annabella. 4.9.72. Breeder, Mrs. J. Brohier.  
Also in Classes 227, 263.

Mrs. Towe

Class 137.—B.P., F.

- 3 282 Mrs. H. Stephenson, RAMONDA MIDNIGHT BLUE (24a), F. Sire, Ch. Taurus Kountry Boy. Dam, Ch. Mekhala Ramonda. 3.3.72. Breeder, Exhibitor.  
Also in Classes 263, 325.
- 1 ch 283 Mrs. J. Neilson, RAMONDA STOKE ROSA (24a), F. Sire, Ch. Taurus Kountry Boy. Dam, Ramonda Velvet. 3.9.71. Breeder, Mrs. H. D. Stephenson.  
Also in Classes 336, 347, 377.
- R 285 Mr. and Mrs. A. Sawkins, BRYMAR AQUILA (24a), F. Sire, Nikaed Nicholas. Dam, Nikaed Alexandra. 30.1.73. Breeders, Mr. and Mrs. B. Saxby.  
Also in Classes 216, 217, 246, 263, 369a.
- 2 286 Mrs. Brabyn-Johnson, CH. CHALMI TAKUA (24a), F. Sire, Ch. Hargill Issis. Dam, Chalmi Chantek. 17.11.71. Breeder, Mrs. A. Imlach.  
Also in Classes 263, 280, 330, 347, 369a, 372.
- Vhc 287 Mrs. C. Best, TIBAAN URSINIA (24a), F. Sire, Ch. Roundway Osmanthus. Dam, Kosmos Crystal. 20.7.72. Breeder, Mrs. Greenacre.  
Also in Classes 216, 246.
- a 288 Mr. and Mrs. K. Hole, SOVEREIGN BEAUTY-BLUE (24a), F. Sire, Ch. Caspa Cazamirez. Dam, Karenza Beautiful Dreamer. 24.3.72. Breeders, Exhibitors.  
Also in Classes 211, 216, 227, 246, 369a, 377.
- Hc 289 Mrs. J. Bunch, HADLEY O'MALLEY (24a), F. Sire, Maytime Blue Imp. Dam, Emma Sweet Lady. 9.6.72. Breeder, Mrs. Webster.  
Also in Classes 216, 217, 330.

Class 138.—C.P., M.

Mrs. Biggie

- 1 ch 290 Misses Garner and Hulbert, TZIROS BARTHOLOMEW (24b), M. Sire, Cantarra Tarquin. Dam, Reegan Devina. 2.4.72. Breeder, Mrs. A. Gaskin.  
Also in Classes 245, 372, 413.

Class 139.—C.P., F.

Mrs. Keene

- a 291 Mrs. J. Harper, ANNSHOLME BUTTONS (24b), F. Sire, Ch. Sunjade Chocolate Domino. Dam, Ryeholme Yipindee. 16.4.72. Breeder, Mrs. Clemerson.  
Also in Classes 216, 280.
- 1/WH 292 Mr. R. Day, PARAMOUNT DINAH (24b), F. Sire, Ch. Reegan Dessau. Dam, Paramount Galaxy. 8.12.72. Breeder, Exhibitor.  
Also in Classes 211, 414.
- a 293 Miss K. Tilby, KATRINE MADAM KAKISHITA (24b), F. Sire, Titaya Mystic Prince. Dam, Katrine Arabian Fanticee. 2.2.72. Breeder, Exhibitor.  
Also in Classes 211, 216, 217, 347, 414.

# **SILKPAWS**

## **BURMESE AND ABYSSINIANS**

At Stud :

**CH. MADRIGAL RED ROVER (23a), 4 C.C.'s**  
Sire: Ch. Taishun Solo

— also —

**CH. SILKPAWS BLUE SMOKE (27a), 3 C.C.'s**  
Sire: Ch. Peerless Sukova  
Both boys are proven sires

---

Burmese Kittens in several colours occasionally for sale

---

All enquiries to : **VAL KILBY**  
**5 Lowndes Close, Bassaleg, Newport, Mon. Tel.: Rhiwderin 3381**  
Easy access to Newport via the M4 motorway, or by British Rail

# **HELP SAVE ANIMALS' LIVES**

by supporting FRAME, the scientifically advised Charity which has established a world centre in Britain for collating and disseminating information on advanced and humane methods of research which benefit both humans and animals.

Details from :

**FRAME**

**"Fund for the Replacement of Animals in Medical Experiments"**

**312a Worples Road, Wimbledon, London SW20 8QU**



**Class 140.—L.P., M.****Mrs. Lentaigne**

- a 294 Mrs. D. Jarrett, KITTYHAWK BENJAMIN (24c), M. Sire, Quintral Frosty Fircone. Dam, Kelmo Pearlwort. 12.1.73. Breeder, Mr. H. Brohier. Also in Classes 217, 245.
- 2 295 Mr. and Mrs. J. Furber, CH. WINCEBY VALENTINE (24c), M. Sire, Ch. Seraphim Sinbad. Dam, Cheyne Lilac Minette. 14.2.68. Breeder, Mrs. A. Codling. Also in Classes 149, 222, 318.
- 1 ch 296 Mrs. C. Cook, KIRASH TOBY (24c), M. Sire, Ch. Kirash Barley. Dam, Ch. Kirash Fiesta. 12.1.73. Breeder, Mrs. S. Beeley. Also in Classes 216, 217.
- a 297 Mrs. R. Bennett, THAIRANO DANDYLION (24c), M. Sire, Ch. Linton Ganymede. Dam, Indra Yashawa. 28.2.72. Breeder, Exhibitor. Also in Classes 259, 284, 377, 428.

**Class 141.—L.P., F.****Mrs. Lentaigne**

- a 298 Mrs. I. Clarke, KELMO PERIWINKLE (24c), F. Sire, Trubun Pedro. Dam, Reegan Cadenza. 15.8.70. Breeder, Mrs. E. Elwell. Also in Classes 214, 217, 318, 413.
- 1 ch 299 Mrs. S. Peters, KIRASH TAMSIN (24c), F. Sire, Ch. Kirash Barley. Dam, Ch. Kirash Fiesta. 12.1.73. Breeder, Mrs. S. Beeley. Also in Classes 318, 342, 408a.
- 3 300 Mrs. S. Madigan, DOBHRAN PRUDENCE (24c), F. Sire, Southview Hazard. Dam, Burtenashan Pon Pussai. 20.11.72. Breeder, Mrs. P. Lamb. Also in Classes 216, 294, 318, 384, 406.
- R 301 Mrs. M. Williams, KITTYHAWK ARIEL (24c), F. Sire, Ch. Karenza Lilac Domino. Dam, Kelmo Pearlwort. 24.5.72. Breeder, Mr. M. Brohier. Also in Classes 216, 298, 342.
- 2 302 Mrs. J. Neilson, TAMRUAT LILAC CORAL (24c), F. Sire, Ch. Tamruat Sohpar. Dam, Ch. Sundance Chantal. 1.5.72. Breeder, Mr. J. Shewbridge. Also in Classes 216, 325, 342.

**Class 142.—TABBY-POINT, M.****Mrs. Dadd**

- a 303 Mrs. Brabyn-Johnson, DARLING WARRIOR (32), M. Sire, Flume Inga. Dam, Dream Girl. 7.1.73. Breeder, Mrs. I. George. Also in Classes 245, 377, 394, 397.

**Class 143.—TABBY-POINT, F.****Mrs. Dadd**

- 2 304 Mrs. Brabyn-Johnson, ELBARAKA ISIS (32), F. Sire, Elbaraka Linceo. Dam, Elbaraka Hephzibah. 1.9.72. Breeder, Miss E. Leach. Also in Classes 246, 342, 373, 377, 394, 397.
- 3 305 Mrs. K. Shelton, TIBAAN ARIES (32), F. Sire, Ch. Tibaan Foetious. Dam, Ch. Tibaan Pisces. 10.5.72. Breeder, Mr. J. Greenacre. Also in Classes 217, 246, 347, 373, 397.
- a 306 Mrs. G. Evans, TIBAAN ALIOTH (32), F. Sire, Ch. Tibaan Foetious. Dam, Ch. Tibaan Pisces. 10.5.72. Breeder, Mr. J. Greenacre. Also in Classes 216, 369a, 373, 397.
- R 307 Mr. and Mrs. B. Niblett, PAPAYA SAMANTHA (32), F. Sire, Ch. Sontew Amaranthus. Dam, Asharon Petal. 18.7.72. Breeder, Mr. T. Papa. Also in Classes 216, 259, 373, 389, 394, 397.
- 1 ch 307a Mrs. J. Moore, CHEONA MEDEA (32), F. Sire, Ch. Marshbrook Sascha. Dam, Meikleriggs Hecate. 19.8.72. Breeder, Exhibitor. Also in Classes 211, 216, 373, 394, 397.

vuc 307b

**Class 144.—RED-POINT, M.****Mrs. Clarke**

- 1 ch 308 Mrs. C. Wagstaff, COOMBEHURST HIGHWAYMAN (32a), M. Sire, Moonfleet Aurica. Dam, Coombehurst Akela Brunie. 29.10.72. Breeder, Exhibitor. Also in Classes 355, 384.
- 2 309 Mrs. S. Wilson-Smith, JAQUEEN PINK ICING (32a), M. Sire, Samsara Bandit. Dam, Lewkliana Opawn. 19.12.72. Breeder, Mrs. Moss. Also in Classes 216, 325, 351, 355.

## RED, CREAM, TORTIE, BLUE CREAM AND BROWN TABBY SOCIETY

Tel.: Cholsey 255

THE ONLY CLUB WHICH PUBLISHES THE TRUE TYPES FOR JUDGES,  
EXHIBITORS AND BREEDERS

The Club possesses over 50 Trophies, some of which are offered at all Ch. Shows, and support is also given to Non-Championship Shows. Classes for Long and Short-Hair Breeds of the above varieties and open to R.C.T. members only for Cats and Kittens are guaranteed throughout the Show Season.

The Hon. Secretary is always pleased to help experienced Fanciers or to advise Novice Members

Ped. Forms 17½p doz. Annual Subscription 50p. Entrance Fee 25p. Life Membership £6

Hon. Secretary: MRS. J. M. NEWTON, Moultsford Grange, Moultsford, Berks.

Hon. Treasurer: MRS. I. A. EARNSHAW, Heatherpine, Curridge, near Newbury

## LYDEARD BURMESE AND SIAMESE

AT STUD :

CH. LYDEARD BLUE JUAN (27a). Sire: Ch. Lydeard Jason  
LINLINKYE SHOSHONE (27). Sire: Tapawingo Tsimshian

All with good eye colour. Studs and Queens have heated houses

Kittens for sale—27, 27a, 27c, 27f, 27g  
Queens met at Taunton Station

MRS. A. F. PIKE, IONA HOUSE, BISHOP LYDEARD, TAUNTON  
SOMERSET  
Tel.: Bishop Lydeard 515

## SHORT-HAIRED CAT SOCIETY OF GREAT BRITAIN AND MANX CLUB INC.

(founded 1901)

Chairman: MISS KIT WILSON. Vice-Chairman: MRS. MONICA THAKE  
Hon. Treas.: MR. R. A. PEARSON, 267 Huddersfield Road, Shelley, Nr. Huddersfield,  
Yorks.

Hon. Sec.: MRS. SHIRLEY BEEVER, Poplars House Farm, Fenwick, Askern,  
Nr. Doncaster, Yorks.

Pedigree forms 20p doz. Subs. 50p plus 50p entry fee. Life membership £5.25

This Society caters for all breeds and varieties of Short-Haired Cats. Classes for members and Specials at all shows

Pedigree forms 25p doz. Subs. 50p plus 50p entry fee. Life membership £5.25  
THIRD CHAMPIONSHIP SHOW, 30th MARCH, 1974, at DONCASTER RACECOURSE

## KALOS BURMESE

BROWN AND BLUE (CARRYING CHOCOLATE)

MRS. JOYCE HANCE

44 Cranbrook Rise - Ilford - Essex IG1 3QN

01-554 3577 (Office 01-638 8166)

**Class 145.—RED-POINT, F.****Mrs. Clarke**

- 2 310 Mrs. S. Chapman, CATHERSTON ZILLA (32a), F. Sire, Ch. Ilona Firefly. Dam, Senlac Bracken. 28.5.72. Breeder, Mrs. D. White.  
Also in Classes 216, 217, 246, 330, 355, 369a.
- 1ch 311 Mrs. I. George, DARLING RED CHARMER (32a), F. Sire, Ch. Darling Red Rufus. Dam, Elbaraka Tirzah. 19.4.72. Breeder, Exhibitor.  
Also in Classes 347, 351, 355, 377, 408a.
- 3 312 Mrs. S. Wilson-Smith, SILBRANA VANESSA ATLANTA (32a), F. Sire, Red Cardinal. Dam, Vanathon Melonie. 2.12.72. Breeder, Exhibitor.  
Also in Classes 211, 355.

**Class 146.—TORTIE-POINT, M. or F.****Mrs. Clarke**

- 2 313 Mr. and Mrs. A. Sawkins, PRIORSGATE SOULANGIANA (32b), F. Sire, Ch. Bradgate Yippee. Dam, Madame Cherie. 6.1.73. Breeder, Mrs. Stratton.  
Also in Classes 216, 217, 246, 369a.
- 3 314 Mrs. S. Wilson-Smith, SUKI MARTONY HIRRANDAH (32b), F. Sire, Pendlepudi Pylandees. Dam, Vanathon Melonie. 4.8.72. Breeder, Exhibitor.  
Also in Classes 211, 356.
- 18/n

**Classes 147 and 148.—CANCELLED. NO ENTRIES.****Class 149.—CHAMPION OF CHAMPIONS.****Mrs. Macalister**

- 19/ch 261 Mrs. T. Folkes, CH. CYMBELINE SANS PAREIL (24), M. Sire, Ch. Killdown Vanguard. Dam, Ch. Dunchattan Ayshah. 12.2.72. Breeder, Exhibitor.  
See Open Class 134.
- a 262 Mr. and Mrs. R. Hutton, CH. SISLINKI TOPSUN (24), M. Sire, Ch. Sislinki Topal. Dam, Karibur Jarna. 16.8.71. Breeder, Mrs. Neale.  
See Open Class 134.
- R 295 Mr. and Mrs. J. Furber, CH. WINCEBY VALENTINE (24c), M. Sire, Ch. Seraphim Sinbad. Dam, Cheyne Lilac Minette. 14.2.68. Breeder, Mrs. Codling.  
See Open Class 140.
- a 315 Mrs. L. Abbey, CH. QUINTRAL PIRATA (24c), M. Sire, Quintral Frosty Fircone. Dam, Ch. Cantarra Hyacintha. 31.12.71. Breeder, Exhibitor.  
Also in Classes 245, 369.
- 316 Mrs. E. Williams, CH. MOSMI ARISTOTLE (24a), M. Sire, Ch. Ulysses O'Grady. Dam, Meikleriggs Andromeda. 17.7.68. Breeder, Mrs. P. Smith.  
Also in Classes 245, 263, 325.

**OPEN CLASSES—SIAMESE KITTENS (3-9 MONTHS)****Class 150.—SEAL-POINT (3-6 months), M.****Mrs. Lauder**

- 3 317 Mrs. E. Menezes, TAISHUN TOKA (24), M. Sire, Ch. Killdown Eros. Dam, Taishun Carmen. 18.6.73. Breeder, Exhibitor.  
Also in Classes 212, 370.
- R 318 Mr. and Mrs. Stevens, SNEVETS LESLIE GEORGE (24), M. Sire, Ch. Longacres Jeremy. Dam, Cymbeline Fleur Delys. 24.7.73. Breeders, Exhibitors.  
Also in Classes 212, 359, 378, 385, 406.
- 1 319 Mr. and Mrs. Stevens, SNEVETS LEONARD (24), M. Sire, Ch. Longacres Jeremy. Dam, Cymbeline Fleur Delys. 24.7.73. Breeders, Exhibitors.  
Also in Classes 212, 359, 378, 385, 406.
- MC 320 Mr. F. Gray, DEERSPRIGHT SHAITANI (24), M. Sire, Lilac Punch. Dam, Tessianna. 11.7.73. Breeder, Exhibitor.  
Also in Classes 212, 218, 220.
- 2 321 Mrs. J. Bunch, PEARDROP SON JAMES (24), M. Sire, Seadog Ajax. Dam, Edelweiss Selena. 15.7.73. Breeder, Exhibitor.  
Also in Classes 212, 218, 330.
- 322 Mrs. J. Williams, MERDEKA CHOOKA-CHOOKA (24), M. Sire, Ch. Thormar Chang-Foo. Dam, Merdeka Angelique. 14.7.73. Breeder, Exhibitor.  
Also in Classes 212, 218, 247.
- 323 Mrs. J. Williams, MERDEKA COOCOO-LOORA (24), M. Sire, Ch. Thormar Chang-Foo. Dam, Merdeka Angelique. 14.7.73. Breeder, Exhibitor.  
Also in Classes 212, 218, 247.

**West of England and South Wales  
Cat Society**

invite you to their

**TROPHY TEA PARTY**

WHERE CUPS AND TROPHIES WON HERE TODAY BY  
MEMBERS WILL BE PRESENTED

to be held at

**THE WESTMORELAND HALL**  
**Westmoreland Road, Bristol**

— on —

**SATURDAY, JANUARY 19th**

at 3 p.m.

---

TEA WILL BE PROVIDED BY THE COMMITTEE

---

**ADMISSION 25p**

Tickets obtainable from Hon Secretary, Mrs. O. B. Olive

---

MEMBERS AND FRIENDS WILL BE WELCOME

**Class 151.—SEAL-POINT (3-6 months), F.****Mrs. Dadd**

- 2 326 Mrs. Gibbard, KAYMENH TAMSIN (24), F. Sire, Kaymenh Tomosina. Dam, Whiteacres Piers. 12.6.73. Breeder, Exhibitor.  
Also in Classes 218a, 259, 359.
- a 327 Mrs. J. Harper, HARMAN MIA (24), F. Sire, Mintaka Orion. Dam, Velvet Maiden. 9.6.73. Breeder, Exhibitor.  
Also in Classes 212a, 218a, 220, 281.
- 328 Mrs. R. Pring, LIPEMA ZOE (24), F. Sire, Nikaed Achelous. Dam, Cymbeline Zoe. 2.7.73. Breeder, Mrs. Sparrey.  
Also in Classes 218a, 220, 248, 374, 385.
- a 329 Mrs. P. Gent, KOOFUKUNA BETTINA (24), F. Sire, Ch. Southview Thor. Dam, Paramount Diamond. 24.6.73. Breeder, Exhibitor.  
Also in Classes 218a, 374.
- a 330 Mr. and Mrs. McAllister, KALAYA KATHAKALI (24), F. Sire, Stonecroft Coriander. Dam, April Mischief. 25.7.73. Breeders, Exhibitors.  
Also in Classes 212a, 218a.
- a 331 Mr. and Mrs. McAllister, KALAYA KESTRELLE (24), F. Sire, Stonecroft Coriander. Dam, April Mischief. 25.7.73. Breeders, Exhibitors.  
Also in Classes 212a, 220.
- 3 332 Mrs. N. Stroud, FAIR GILLY (24), F. Sire, Ch. Killdown Eros. Dam, Ch. Fair Miss Friday. 29.6.73. Breeder, Exhibitor.  
Also in Classes 212a, 218a, 248, 359, 370a.
- 333 Mrs. J. Mills, MERDEKA CURBARRA (24), F. Sire, Ch. Thormar Chang-foo. Dam, Merdeka Angelique. 14.7.73. Breeder, Mrs. Williams.  
Also in Classes 218a, 220, 248, 378.
- R 334 Mrs. J. Javahery, CYMBELINE KISHINA (24), F. Sire, Ch. Cymbeline Sans Pareil. Dam, Cymbeline Quanita. 10.5.73. Breeder, Mrs. Folkes.  
Also in Classes 218a, 220.
- a 335 Mrs. J. Bunch, PEARDROP PRUDENCE (24), F. Sire, Seadog Ajax. Dam, Edelweiss Selena. 15.7.73. Breeder, Exhibitor.  
Also in Classes 212a, 218a, 330.
- 2 336 Mrs. E. Menezes, TAISHUN TIFFANY (24), F. Sire, Ch. Killdown Eros. Dam, Taishun Carmen. 18.6.73. Breeder, Exhibitor.  
Also in Classes 220, 363, 370a.
- 337 Mrs. J. Williams, MERDEKA CARINA (24), F. Sire, Ch. Thormar Chang-foo. Dam, Merdeka Angelique. 14.7.73. Breeder, Exhibitor.  
Also in Classes 212a, 218a, 220, 281, 326.

**FOR SALE.****Class 152.—SEAL-POINT (6-9 months), M.****Mrs. Lauder**

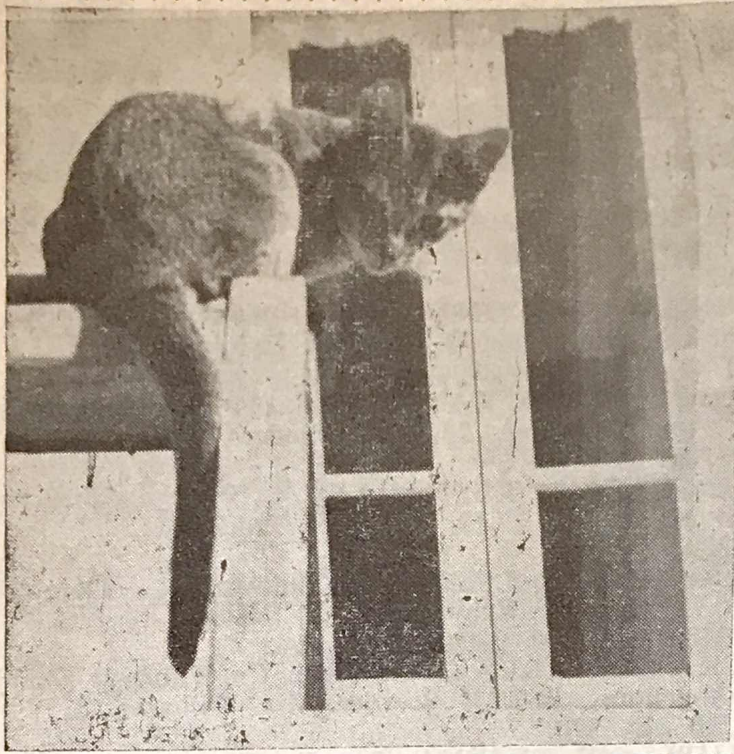
- a 338 Mr. and Mrs. R. Hutton, PAROMA ELISIA (24), M. Sire, Ch. Sislinki Topsun. Dam, Kaymenh Antoinette. 26.2.73. Breeders, Exhibitors.  
Also in Classes 213, 307, 359, 370, 374, 378.
- 2 339 Mrs. E. Dick, SUAAN KIKU (24), M. Sire, Ch. Siepoo Storm. Dam, Karawong Chewyn. 18.3.73. Breeder, Exhibitor.  
Also in Classes 213, 219, 326, 348, 370.
- 1 340 Mrs. B. Shackell, TORNEYS HOUDINI (24), M. Sire, Nikaed Achelous. Dam, Lanceroi Tasmin. 13.3.73. Breeder, Exhibitor.  
Also in Classes 213, 219, 247.
- 3 340a Miss E. Welsford, CASPA TALLAHASSE (24), M. Sire, Saturn Sentinel. Dam, Gresley Fernie. 26.4.73. Breeders, Mr. and Mrs. Furber.  
Also in Class 219.

**Class 153.—SEAL-POINT (6-9 months), F.****Mrs. Dadd**

- a 341 Mr. and Mrs. J. Furber, CASPA TANSY (24), F. Sire, Saturn Sentinel. Dam, Gresley Fernie. 26.4.73. Breeders, Exhibitors.  
Also in Classes 213, 248, 385, 406.
- a 342 Mrs. K. Orton, SUMMERFIELD FAITH (24), F. Sire, Killdown Khan. Dam, Summerfield Caterina. 20.2.73. Breeder, Exhibitor.  
Also in Classes 213, 370a.
- a 343 Mrs. E. Arnold, FEREMINA ESTELLA (24), F. Sire, Saturn Solo. Dam, Ciosan Carmen. 9.3.73. Breeder, Exhibitor.  
Also in Classes 219, 378.

**Classes 154 and 155.—CANCELLED. NO ENTRIES.**





# ROCKLO

Abyssinians  
Burmese  
Rex

All thoughtfully  
bred for type  
temperament  
and health

**AT STUD: CH. CONTENTED HARVEST MOON (23)**

welcomes approved queens in his house overlooking the sea. Outside runs

Kittens of above breeds sometimes available

Apply: **MRS. I. LOVEYS**

**28 BRENDON ROAD, WATCHET, SOMERSET TA23 0AX**

Tel.: Watchet 395

## DOBHRAN CATS

SIAMESE - BURMESE - ABYSSINIANS

**Burmese at Stud:**

### MUSCADIN APOLLO

A lovely Brown Burmese carrying Blue (proven)

Sire: Ch. Kalos Castor (27); Dam: Muscadin Lazula (27a)

**Kittens by Apollo and Burtenashan Katie-Lou (Brown Burmese Queen here today)) ready to leave home now**

Also Siamese Kittens by Burtenashan Pon-Pussia (24b), and Abyssinian Kittens by Ch. Burtenashan Sokota (23) (1 Grand Ch. Cert.), due mid-November

All enquiries for Stud or Kittens to:

**MRS. PATRICIA D. LAMB**

**41 Blendon Drive - Bexley - Kent**

Tel.: 01-304 1288



**Class 156.—BLUE-POINT (6-9 months), M.****Mrs. Macalister**

- 346 Mr. and Mrs. J. Furber, CASPA SEBASTIAN (24a), M. Sire, Ch. Caspa Lilac Cabalero. Dam, Careyvale Crown Jewel. 25.3.73. Breeders, Exhibitors. Also in Classes 247, 264.
- 347 Mrs. P. Armour, LOUNSDALE BLUE MERCURY (24a), M. Sire, Tailong Kuiki. Dam, Lounsdale Philomelle. 11.4.73. Breeders, Exhibitors. Also in Classes 213, 385, 406, 413.
- 348 Miss N. Allen, THORMAR CRONOS (24a), M.N. Sire, Ch. Mosmi Aristotle. Dam, Careyvale Clary. 17.4.73. Breeders, Misses Garner and Hulbert. Also in Classes 221, 247, 413.
- 349 Mr. and Mrs. B. Saxby, BRYMAR ALDEBARAN (24a), M.N. Sire, Nikaed Nicholas. Dam, Dauntsea Athena. 20.2.73. Breeders, Exhibitors. Also in Classes 213, 247, 264, 281, 343, 385.
- 350 Mrs. L. Abbey, QUINTRAL MARMADUKE (24a), M. Sire, Ch. Quintral Moonsilver. Dam, Ch. Quintral Pettifleur. 4.4.73. Breeder, Exhibitor. Also in Classes 247, 264, 330, 370.

**Class 157.—BLUE-POINT (6-9 months), F.****Mrs. Macalister**

- 351 Mr. P. Inwood, CONDUTEZ DOILY (24a), F. Sire, Cantarra Blue Byou. Dam, Donelaine Rowenza. 22.2.73. Breeder, Mrs. Pitman. Also in Classes 221, 259.
- 352 Mrs. G. Perry, THORMAR CALYPSO (24a), F. Sire, Ch. Mosmi Aristotle. Dam, Careyvale Clary. 17.4.73. Breeders, Misses Garner and Hulbert. Also in Classes 219, 221, 248.
- 353 Mrs. J. Neilson, RAMONDA ROSITA (24a), F. Sire, Zyclon Bo Diddle. Dam, Ramonda Velvet. 10.4.73. Breeder, Mrs. Stephenson. Also in Classes 307, 326, 378.
- 354 Misses Garner and Hulbert, THORMAR CLOTHO (24a), F. Sire, Ch. Mosmi Aristotle. Dam, Careyvale Clary. 17.4.73. Breeders, Exhibitors. Also in Classes 213, 264, 374.
- 355 Mr. and Mrs. J. Furber, CASPA SAMANTHA (24a), F. Sire, Ch. Caspa Lilac Cabalero. Dam, Careyvale Crown Jewel. 25.3.73. Breeders, Exhibitors. Also in Classes 264, 413.

**Class 158.—CHOCOLATE-POINT (3-6 months), M. or F.****Mrs. Hardy**

- 356 Mr. and Mrs. Saxby, SOVEREIGN SHAWNI (24b), F. Sire, Pi-Den Felix. Dam, Physalis Chocolate Candy. 14.5.73. Breeders, Mr. and Mrs. Hole. Also in Classes 218a, 248, 307, 374, 415.
- 357 Mrs. G. Bradley, DUNTIBLAE DISRALI (24b), M. Sire, Sealias Chocolate Ko-Ko. Dam, Flume Dillee. 20.5.73. Breeder, Mrs. Cochrane. Also in Classes 218, 220a.
- 358 Mrs. J. Selwyn, BAKSAN AMBER (24b), F. Sire, Ch. Winceby Valentine. Dam, Baksan Sabrina. 19.5.73. Breeder, Exhibitor. Also in Classes 218a, 248.
- 359 Miss J. May, PHAEON PHANDANGO (24b), F. Sire, Burdach Sumashi Jiru. Dam, Southview Duaha. 26.5.73. Breeder, Mr. Finn. Also in Classes 218a, 259, 370a.
- 360 Mrs. P. Hampson, SLEEKINE JIRINDA (24b), F. Sire, Cantarra Tarquin. Dam, Sleekine Juki. 4.7.73. Breeder, Mrs. Peters. Also in Classes 218a, 220a.
- 361 Mrs. L. Strunin, BAYARD BERENGARIA (24b), F. Sire, Gr. Ch. Seremban Liger. Dam, Bayard Adagio. 22.7.73. Breeder, Exhibitor. Also in Classes 212a, 218a, 311, 326, 374, 378.

**Class 159.—CHOCOLATE-POINT (6-9 months), M. or F.****Mrs. Hardy**

- 362 Mrs. R. Pring, ZAMAAZI HAE SHAN (24b), F. Sire, Solitaire Hilo. Dam, Samsara Kassa. 11.3.73. Breeder, Mrs. Shaw. Also in Classes 248, 385, 415.
- 363 Mrs. R. Spencer, TASPERTU SPINDLEBERRY (24b), M. Sire, Cantarra Blue Byou. Dam, Frisby Ko Chang. 11.4.73. Breeder, Mrs. Spencer. Also in Classes 213, 281, 370, 429.
- 365 Mr. and Miss Fulton, HAPPYLEES GAY TROUBADOUR (24b), M. Sire, Samsara Bandit. Dam, Torlycha. 5.4.73. Breeders, Exhibitors. Also in Classes 213, 219, 221, 281, 317, 343, 348, 351, 415.

# **MERDEKA**

## **SIAMESE AND BURMESE**

**AT STUD :**

**Ch. Mosmi Aristotle (24a)**

**FEE £6.50**

Siring beautiful kittens, passing on his own lovely temperament.  
pale coats and consistent winners on the bench.

Seal, Blue and Lilac-Pointed Kittens available at times from the  
following Queens :

**MERDEKA ANGEЛИQUE (24)**

x

**CH. THORMAR CHANG FOO**

**MERDEKA ARATULA (24a)**

x

**CH. MOSMI ARISTOTLE (24a)**

Blue and Brown Burmese, superb eye colour, from our lovely  
little Queen :

**CH. CHANTELE BLUE DELLA (27a)**

x

**CH. KALOS CASTOR (27)**

---

Contact :

**MRS. E. J. WILLIAMS**

**19 Archery Road - Cirencester - Gloucestershire**

'Phone : Cirencester 2719

- a 366 Mrs. J. Counsell, SHIMRATH DOZY DOMINO (24b), M. Sire, Ch. Sun-jade Chocolate Domino. Dam, Shimrath Fang. 26.3.73. Breeder, Exhibitor. Also in Classes 213, 236, 348, 351, 409, 415.
- R 367 Miss O. Henderson, MONTEM PIERROT (24b), M. Sire, Ch. Winceby Valentine. Dam, Montem Jasmine. 17.2.73. Breeder, Exhibitor. Also in Classes 213, 370, 415.
- l 368 Mrs. S. Wilson-Smith, MUCHLOVED MERRY BOY (24b), M. Sire, Sam-sara Bandit. Dam, Muchloved Pink Pantha. 5.5.73. Breeder, Mrs. Burton-wood. Also in Classes 219, 221, 326.

**Class 160.—LILAC-POINT (3-6 months), M.**

**Mrs. Groom**

- 3 369 Mrs. J. Selwyn, BAKSAN LILAC JASPER (24c), M. Sire, Ch. Winceby Valentine. Dam, Baksan Sabrina. 19.5.73. Breeder, Exhibitor. Also in Classes 212, 218, 247.
- a 370 Mrs. J. Harper, HARMAIN BOYD (24c), M. Sire, Ch. Tamarack Topal. Dam, Elmtree Thuya. 11.6.73. Breeder, Exhibitor. Also in Classes 212, 218, 220a, 281.
- l 371 Mrs. H. Stephenson, RAMONDA LIMELIGHT (24c), M. Sire, Zyclon Bo Diddley. Dam, Ch. Mekhala Ramonda. 7.7.73. Breeder, Exhibitor. Also in Classes 212, 218, 319, 343, 348, 370.
- a 372 Mrs. H. Stephenson, RAMONDA LILAC LYRIC (24c), M. Sire, Zyclon Bo Diddley. Dam, Ch. Mekhala Ramonda. 7.7.73. Breeder, Exhibitor. Also in Classes 212, 326, 330.
- a 373 Mrs. I. Clarke, BREWTONYA VENDRICK (24c), M. Sire, Ch. Winceby Valentine. Dam, Kelmo Periwinkle. 6.7.73. Breeder, Exhibitor. Also in Classes 212, 319.
- 2 374 Mrs. C. Best, SILVERTHORNE SARACEN (24c), M. Sire, Ch. Sovereign Lilac Lance. Dam, Tara Ming. 28.5.73. Breeder, Exhibitor. Also in Classes 212, 220a, 247.
- R 375 Mr. and Mrs. K. Hole, SOVEREIGN PROUD PERSUASION (24c), M. Sire, Ch. Sovereign Lilac Lance. Dam, Sovereign Beauty-Blue. 28.5.73. Breeder, Exhibitor. Also in Classes 212, 228, 370.

**Class 160a.—LILAC-POINT (3-6 months), F.**

**Mrs. Groom**

- a 376 Mrs. L. Abbey, QUINTRAL TUPTIM (24c), F. Sire, Ch. Quintral Pirata. Dam, Quintral Tapatuo. 21.7.73. Breeder, Exhibitor. Also in Classes 212a, 248, 319.
- 2 377 Mr. T. Papa, PAPAYA GLITTER (24c), F. Sire, Ch. Quintral Pirata. Dam, Asharon Petal. 28.6.73. Breeder, Exhibitor. Also in Classes 212a, 259, 319.
- 3 378 Mr. T. Papa, PAPAYA CHARLOTTE (24c), F. Sire, Ch. Quintral Pirata. Dam, Asharon Petal. 28.6.73. Breeder, Exhibitor. Also in Classes 218a, 220a, 378.
- l 379 Mrs. E. Lloyd-Williams, PENYRALLT PAVLOVA (24c), F. Sire, Ch. Linton Ganymede. Dam, Ch. Whirligig Tsaritsa. 22.5.73. Breeder, Mr. Atha-vale. Also in Classes 228, 248, 287, 378.
- R 380 Mrs. D. Winsley, DUNTIBLAE DELICATE AIR (24c), F. Sire, Sealias Chocolate Ko-Ko. Dam, Flume Dillee. 20.5.73. Breeder, Mrs. Cochrane. Also in Classes 218a, 281.
- HC 381 Mrs. P. Healey, SAFFRON (24c), F. Sire, Ridgaling Caramello. Dam, Flume Parana. 20.6.73. Breeder, Exhibitor. Also in Classes 212a, 218a, 220a, 307, 378.
- VHC 382 Mrs. M. Jones, MEMKOO KATTERINA (24c), F. Sire, Gledhow David-Bee. Dam, Sakana Kahri. 16.5.73. Breeder, Exhibitor. Also in Classes 228, 317.

**Class 161.—LILAC-POINT (6-9 months), M. or F.**

**Mrs. Groom**

- 3 383 Mrs. P. Grigg, CHATGLO SOLOMAN (24c), M. Sire, Ch. Thormar Chang Foo. Dam, Sansterre Magnolia. 3.4.73. Breeder, Exhibitor. Also in Classes 247, 319, 370.

## **SMOKEYHILL CHINCHILLAS, COLOURPOINTS AND BIRMANS**

At Stud : **BAYTOR TOM-TOM, B.P., 1 C.C. (13b)**  
**CH. SOLOMON VON ASSINDIA, Seal Birman**

Kittens available from prize-winning queens. House-reared, inoculated  
and registered. All kittens used to dogs

**MISS BROWN, SMOKEYHILL PUSSOTEL, CASTLE LEA, CRETE ROAD  
WEST, FOLKESTONE** Tel.: Hawkinge 2462

## **THORMAR SIAMESE AND BURMESE**

At Stud: **TZIROS BATHOLOMEW, C.P. (1 C.C.)**  
Son of Cantarra Tarquin. Grandson of Ch. Spotlight Rouble

ON SHOW TODAY

Kittens sometimes available from our beautiful queens—Chocolates, Blue  
and later Blue Burmese

**MISSES T. GARNER and M. HULBERT**  
"Thormar," Forthay, North Nibley, Dursley, Gloucestershire  
Tel.: Dursley 3653

## **LIZANNE AND ZEUS SIAMESE**

At Stud :  
**NIKAED ACHELOUS, S.P. (1 C.C.)**  
**ZEUS GALANTHUS, B.P. (2 C.C.'s)**  
**CHALMI TAMBI, B.P.**

Queens met at Taunton Station

Kittens often available

**RHONA PRING and DEL FRECKER**  
Langaller Farmhouse - Bathpool - Taunton  
Tel.: West Monkton 615

## **TARAWOOD PATRUSHKA**

RUSSIAN BLUE (1 C.C.)

has succeeded his father, Lars of Finlandia, now retired. He is happy to  
receive suitable queens at

**TARAWOOD, BRADFORD ROAD, HAWTHORN, WILTS.**

Tel.: Hawthorn 810443

SEE HIM AT THIS SHOW

- 1 384 Mrs. M. Ward, CHATGLO SHERRI (24c), M. Sire, Ch. Thormar Chang  
Foo. Dam, Sansterre Magnolia. 3.4.73. Breeder, Mrs. Grigg.  
Also in Classes 219, 221.
- Vnc 385 Miss O. Henderson, CRAIGIEHILLOCH LILAC LADIN (24c), M. Sire,  
Beauvallet. Dam, Craigiehilloch Petunia. 24.4.73. Breeder, Mrs. Clarke.  
Also in Classes 319, 370.
- R 386 Mr. and Mrs. K. Hole, SOVEREIGN FROSTY FALCON (24c), M. Sire,  
Ch. Quintral Moonsilver. Dam, Karenza Beautiful Dreamer. 8.5.73.  
Breeders, Exhibitors.  
Also in Classes 213, 228, 247, 378.
- HC 387 Mrs. C. Ludwell, SOVEREIGN SILVER DREAM (24c), F. Sire, Ch. Quin-  
tral Moonsilver. Dam, Karenza Beautiful Dreamer. 8.5.73. Breeders, Mr.  
and Mrs. Hole.  
Also in Classes 228, 248, 370a.
- C 388 Mrs. R. Pring, ZAMAAZI MYSTIE (24c), F. Sire, Ch. Dandycat Brown  
Bear. Dam, Dinwoodie Oranshee. 6.5.73. Breeder, Mrs. Shaw.  
Also in Classes 248, 319, 385.
- 2 389 Miss D. Frecker, ZEUS SYRINGA (24c), F. Sire, Chalmi Tambi. Dam,  
Zeus Azalea. 7.3.73. Breeder, Exhibitor.  
Also in Classes 213, 248.
- a 390 Mrs. S. Blackman, SOVEREIGN BEAUTIFUL MOON (24c), F. Sire, Ch.  
Quintral Moonsilver. Dam, Karenza Beautiful Dreamer. 8.5.73. Breeders,  
Mr. and Mrs. Hole.  
Also in Classes 319, 326, 370a.

**Class 162.—TABBY-POINT (3-6 months), M. or F.**

**Mrs. Philpot**

- a 391 Absent, CHINE CATALPA (32), F. Sire, Silken Ozymandias. Dam, Hasty  
Pudding. 15.5.73. Breeder, Mrs. Frere.  
Also in Classes 220a, 375, 395, 398.
- 2 392 Mrs. L. Strunin, BAYARD BOADICEA (32), F. Sire, Gr. Ch. Seremban  
Liger. Dam, Bayard Adagio. 22.7.73. Breeder, Exhibitor.  
Also in Classes 212a, 218a, 311, 326, 375, 378, 395.
- R 393 Mrs. D. Deakin, DAUNTSEA HERA (32), F. Sire, Ch. Herbe Slippertree.  
Dam, Nikaed Admeta. 6.6.73. Breeder, Mrs. Searby.  
Also in Classes 218a, 248, 281, 307, 343, 375, 398.
- 1 394 Mrs. S. Spencer, FOXTWIST VALDA (32), F. Sire, Ch. Kirash Barley.  
Dam, Doonewarah Minitam. 9.7.73. Breeder, Exhibitor.  
Also in Classes 212a, 220a, 281, 343, 378, 398.
- 3 395 Mrs. S. Spencer, FOXTWIST AQUAMANDA (32), F. Sire, Ch. Boidheach  
Macgille. Dam, Ch. Foxtwist Bush Baby. 27.7.73. Breeder, Exhibitor.  
Also in Classes 212a, 220a, 281, 343, 378, 398.

**Class 163.—TABBY-POINT (6-9 months), M. or F.**

**Mrs. Philpot**

- 1 396 Mrs. P. Gent, KOOFUKUNA DARISON (32), M. Sire, Ch. Southview  
Thor. Dam, Koofukuna Nimbus. 10.3.73. Breeder, Exhibitor.  
Also in Classes 213, 259, 375.

**Class 164.—RED-POINT (3-9 months), M. or F.**

**Mrs. Halliday**

- 1 397 Mrs. P. Brabyn-Johnson, DARLING RED TUDOR (32a), M. Sire, Ch.  
Elbaraka Trophimus. Dam, Syming Neapolitan. 21.2.73. Breeder, Mrs.  
George.  
Also in Classes 281, 343, 351, 355.
- a 398 Mrs. P. Brabyn-Johnson, DARLING APOLLO (32a), M. Sire, Fair Fairo.  
Dam, Ch. Darling Angelique. 9.8.73. Breeder, Mrs. George.  
Also in Classes 247, 355, 375.

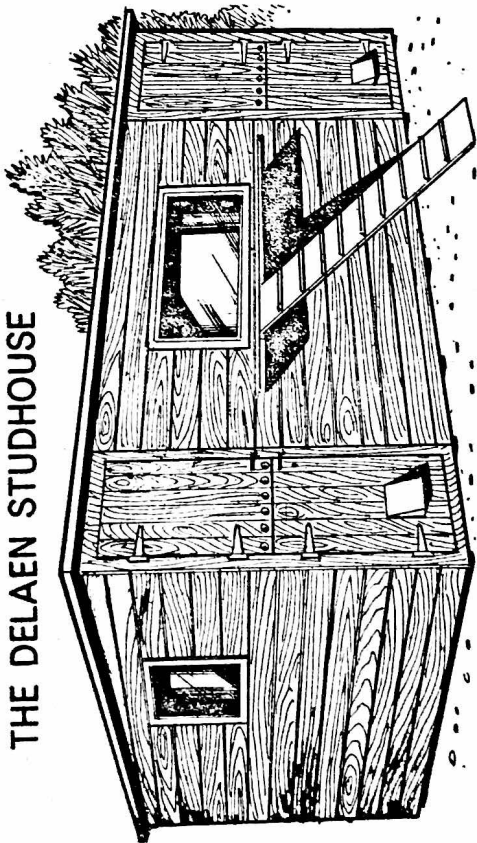
**Class 165.—TORTIE-POINT (3-9 months).**

**Mrs. Halliday**

- R 399 Mrs. M. Jones, DARLING HARMONY (32b), F. Sire, Fair Fairo. Dam,  
Ch. Darling Angelique. 9.8.73. Breeder, Mrs. George.  
Also in Classes 228, 356.
- a 400 Miss Ferrer, CHEONGSUN OPHELIA (32b), F. Sire, Ch. Pitapat Hia-  
watha. Dam, Sheban Lucetta. 25.4.73. Breeder, Mrs. Shaw.  
Also in Classes 356, 375.

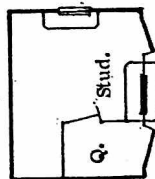


## THE DELAEN STUDHOUSE

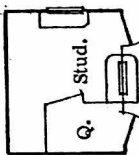


Front Elevation

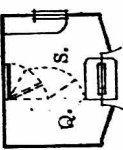
10'0" x 8'0"



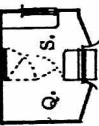
9'0" x 7'0"



8'0" x 6'0"



7'0" x 5'0"

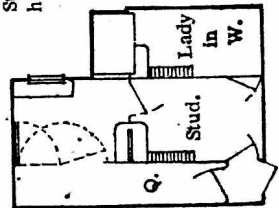


A few examples of standard sizes

Stud houses with depths of 6'0" and less can have hinged Queens partitions allowing whole area for Stud.

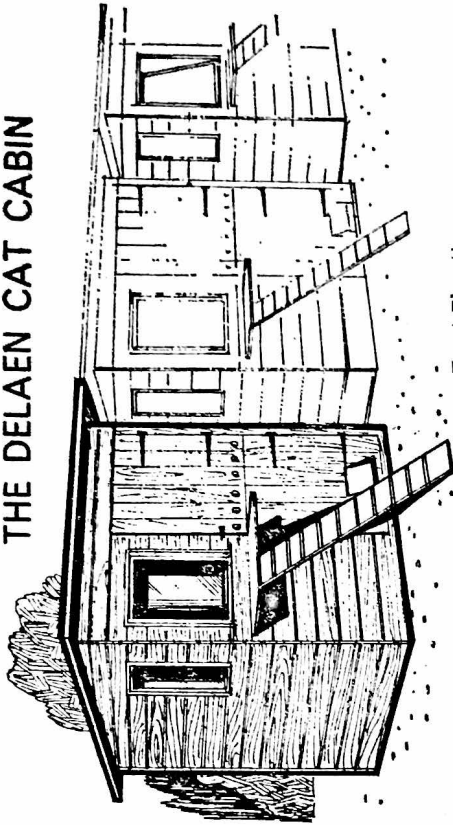
Runs can be of any length but it is recommended that the width should be the same as the width of the Stud house. The Queens quarters can be on either side to suit the location of the unit or the customers particular requirements.

Penthouses and runs for Ladies-in-Waiting may be fitted only on the opposite side to the Queen.



Composite Stud House and Penthouse for Lady-in-waiting.

## THE DELAEN CAT CABIN

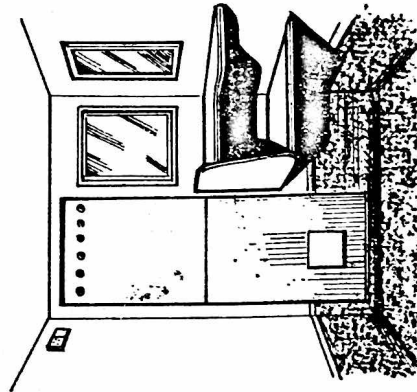


Front Elevation.

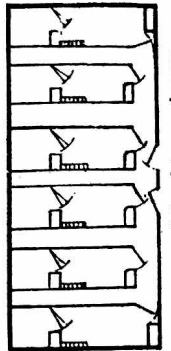
The DELAEN CAT CABIN has been designed for use as a single unit or in a range of any number. In the latter case a safety passage 2'0" wide is formed between the end runs along the front, and there is an 18"/24" space between each cabin and the next. Standard equipment includes Dunlop Vynolay flooring covered and extended 12" up in cabin; cat door, sunning shelf and cat ladder in run, as illustrated.

Extras: Run roofs can be sheeted with corrugated translucent Plastic sheeting and 4'0" anti-sneeze barriers of "Clarilex" can be fitted on one side of each passage. Electric light fittings and 3 pin 13 amp. switch sockets will be supplied on request, also Infra Red Dull Emitter Heater.

Cabin 4'0" x 4'0" x 6'9" / 6'3" high  
Single Run 10'0" x 4'0" x 6'7" / 6'2"  
Both end runs 10'0" x 4'0"  
Intermediate runs 8'0" x 4'0"



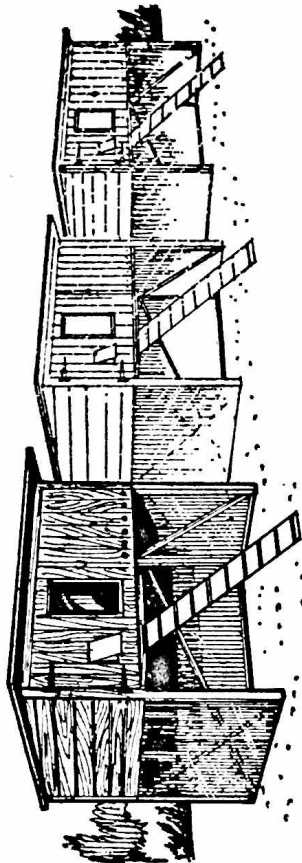
View of inside of cabin.



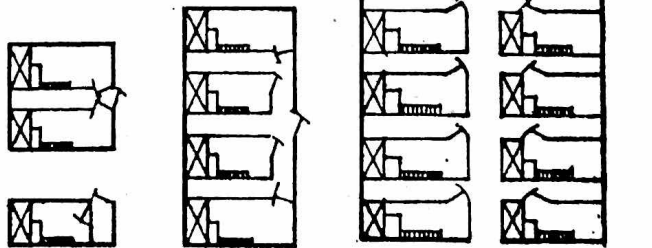
Range of 6 cabins and runs.



## THE DELAEEN PENTHOUSE



The Delaeen Penthouse Mk. III can be supplied as a single unit, straight range or double ranges. Outside cladding is 5" shiplap section treated with Rentokil cedar-wood water repellent. Rocksill  $\frac{3}{4}$ " fibreglass insulation on walls, floor, ceiling and doors. Hardboard internal lining painted 3 coats paint finished Primrose non-toxic hard gloss. 2 hinged doors, one with double clear plastic window and Pussflap - the other with ventilation ducts. Roof covered in green mineral roofing felt. Three sides of litter tray area sheeted in corrugated PVC sheeting.

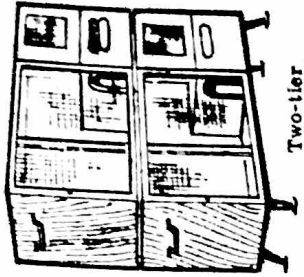


**Important dimensions.**  
 Overall height inside front 29"  
 " " " back 26"  
 " " width 40"  
 " " depth 25"  
 Height of litter area 30"  
 Width " 41"  
 Depth " 26"  
 Overall size of roof 47" x 33"  
 Size of sunning shelf 22" x 10"  
 Size of run (single) 10'0" x 4'0"  
 " intermediate runs inside the safety area 8'0" x 4'0".

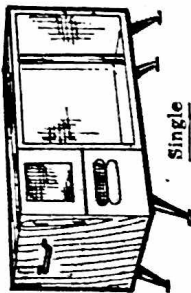
**DELAEN CAT CABINS**  
 SCRIVENS HILL, WOODFORD HALSE  
 DAVENTRY, NORTHANTS.

Telephone: BYFIELD 60865

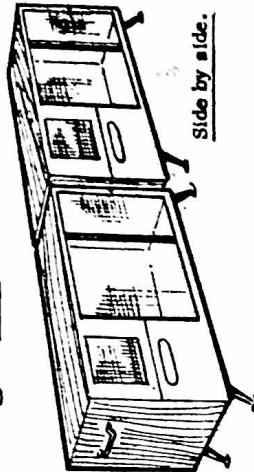
## THE DELAEEN KITTEN NURSERY PEN



Two-tier



Single



Side by side.

**Colour schemes.**  
 Standard: Rentokil on outside/Primrose inside but any colour can be chosen for both outside and inside.  
 Range: White, Primrose, Adonis Blue, & Pale Green  
 Extra charges are made only for the outside colouring.

The Delaeen Kitten Nursery Pen has been designed for use by the queen and her kittens almost from birth until the kittens are weaned when mother can be removed leaving the kittens a home and playpen out of harms way until they reach an age for sale or graduation to adult quarters.

**Dimensions (avoiding small fractions).**

Overall 5'5" long x 2'6" high x 2'0" wide.  
 Exercise Pen 3'11" " x 2'3" " x 1'11 1/2" "  
 Kittens Bedroom 1'11" " x 1'2" " x 1'6" "  
 Queens Rest Area 1'11" " x 1'3" " x 1'6" "

**Treatments** Outside: Rentokil Cedarwood Water Repellent  
 Inside: 3 coats paint finished Primrose hard gloss  
 Floors: (all compartments) Dunlop Vynolay which is completely removable for cleaning purposes.

**Main features**  
 Playpen front is timber framed and 1" x 1/2" Twilweid with door for feeding and placing of litter tray. Twilweid and clear plastic picture window in front of Queens Rest Area, wired ventilation peep window with shutter in front of kittens bedroom. All three of these fronts are completely removable for easy cleaning.  
 Two hinged handles are fitted to enable whole pen to be carried through modern internal doorway.

# When it comes to printed stationery we give cat breeders the "Top off the Milk"

- ◆ Letterheadings set in attractive designs from a wide choice of print styles.
- ◆ Matching envelopes with your breeder's prefix printed on the back flap.
- ◆ Matching Business Cards.
- ◆ "Boss-Cat" Business Cards at a special price to cats!
- ◆ Pedigree forms, Mating certificates and a new "feminine" business card with red, blue, green or gold border has recently been added to our range of matching stationery for the Cat Fancy.
- ◆ Special quotations to all Cat Clubs for stationery requirements.

WE GIVE A REALLY PERSONAL SERVICE



Write for details from :

**PERSONAL  
PRINT**

**OLDFIELD - WOODGASON LANE  
HAYLING ISLAND - HANTS. PO11 0RL**

- 1 401 Mrs. D. Deakin, CHEONGSUN ORIANA (32b), F. Sire, Ch. Pitapat Hiawatha. Dam, Sheban Lucetta. 25.4.73. Breeder, Mrs. Shaw.  
Also in Classes 248, 307, 330, 343, 356, 375.
- 3 402 Mrs. Strawford, MARSHBROOK MISS WILLOW (32b), F. Sire, Ch. Elbaraka Trophimus. Dam, Keywood Pearl. 10.8.73. Breeder, Exhibitor.  
Also in Classes 212a, 281.
- 2 403 Mrs. Strawford, MARSHBROOK WILDROSE (32b), F. Sire, Ch. Elbaraka Trophimus. Dam, Keywood Pearl. 10.8.73. Breeder, Exhibitor.  
Also in Classes 212a, 281.

**Class 166.—A.O.D. (BREED 32c), (3-9 months), M. or F. Mrs. Halliday**

- 2 404 Mrs. C. Shackell, CREAM MARTINI (32c), M. Sire, Dandino. Dam, Ambrizette Tup-Tim. 15.6.73. Breeder, Mrs. Green.  
Also in Classe 218, 220a.

**PREMIER CLASSES—NEUTERS ONLY**

**Class 167.—BLUE L.H. NEUTER. Mrs. Knight**

- 405 Mrs. C. Taylor, LEOCRIS NINA (3), F.N. Sire, Peereth Aaron. Dam, Ch. Edelstein Marionette. 8.3.71. Breeder, Exhibitor.  
Also in Classes 229, 331, 344.
- 406 Mrs. A. Rawlings, ARDWYN CYRUS (3), M.N. Sire, Ch. Bayhorne Ajax. Dam, Ch. Uplands Anna Capri. 4.4.66. Breeder, Miss Davies.  
Also in Classes 236, 250, 282, 331.
- 407 Mrs. L. Clayton, ALCMUND JAMIE (3), M.N. Sire, Camber Frivolson. Dam, Alcmund Tina. 1.7.66. Breeder, Mrs. Halls.  
Also in Classes 229, 234, 236, 250.

**Class 168.—A.C. SELF L.H. NEUTER (Ex. BLUE). Mrs. Crockart**

- 408 Miss B. Edwards, ASTA (1), F.N. Sire and Dam, Unknown. 2.5.71. Breeder, Unknown.  
Also in Classes 229, 235.
- 409 Dr. and Mrs. K. Bentley, FISHERMORE FIDELIO (1), M.N. Sire, Fishermore Sultan. Dam, Fishermore Giovanna. 11.5.70. Breeder, Mrs. Lodge.  
Also in Classes 229, 327, 344, 410.
- 410 Mrs. D. Thompson, STROMA SEBASTIAN (5), M.N. Sire, Silverstar Sebastian. Dam, Dolmeg Sweet Sue. 21.7.71. Breeder, Mrs. Rowe.  
Also in Classes 229, 234, 250, 337.
- 411 Mr. S. Staples, PR. BRACKENHILL CREAM SHERRY (5), M.N. Sire, Ch. Wildfell Ploughboy. Dam, Petravian Penny. 17.7.70. Breeder, Mrs. Tillotson.  
Also in Classes 183, 229, 260, 312, 331, 424.

**Class 169.—A.C. L.H. NEUTER (Ex. SELF-COLOURED). Mrs. Hughes**

- 412 Mrs. C. Best, IDLEBECK SULINO (13b), N. Sire, Ch. Mingchiu Shan. Dam, Polic Rowstock. 12.7.72. Breeder, Mrs. Acton.  
Also in Classes 234, 250.

**Class 170.—A.V. BRITISH NEUTER. Mrs. Newton**

- 413 Mrs. D. Thompson, STARBOURNE SILVER PERIGEE (18), M.N. Sire, Ch. Perrington Silver Ace. Dam, Starbourne Easter Carol. 1.9.72. Breeder, Mrs. Light.  
Also in Classes 232, 233, 234, 251, 337.

**Class 171.—A.V. FOREIGN NEUTER (Ex. BURMESE and SIAMESE).**

**Mrs. Aitken**

- 1 pr 414 Miss B. Munford, CH. PATTI PUSS (33), F.N. Sire, Sunbronze Batman. Dam, Angelicus Pussicuss. 20.8.69. Breeder, Mrs. Gane.  
Also in Classes 365, 368, 407.
- R 415 Mr. S. Holcombe, TSU-MING SNOKAT (33a), M.N. Sire, Pearcroft Sacha. Dam, Redcliffe Cupid's Whisper. 5.5.73. Breeder, Mrs. Robinson.  
Also in Classes 233, 235.