

- 163 Mrs. G. Hill, WILLOWGLEN GAY BALLERINA. See Class 26.
 165 Mrs. S. Machin, TRELANE AZTEC EVENTIDE. See Class 26.
 166 Mrs. N. Rosell, BRUTON CONFETTI. See Class 26.
 170 Mrs. M. Andrews, WOODHAZE RACHAEL. See Class 27.
 171 Mrs. B. Freeman, LEAWOOD MELODY. See Class 27.
 173 Mrs. P. Mariott, DUNDAEL BOADICEA. See Class 27.
 174 Mrs. S. McGarry, ARCHSUE JENNY MAY. See Class 27.
 181 Mrs. J. White, SUMMERS JEMMA. See Class 28.
 197 Mrs. D. Cunis, MERRYNO ROSETTE. See Class 31.
 201 Mrs. M. Goude, MARIANA. See Class 31.
 202 Mrs. M. Goude, MADRIGAL. See Class 31.
 204 Mrs. J. P. Harding, MINGCHIU FANIA. See Class 31.
 205 Mrs. M. Kayes, RAIMA WREN. See Class 31.
 207 Mrs. S. Machin, AZTEC JENNY WREN. See Class 31.
 208 Mr. G. Sucksmith, PETITE-POINT PIROUETTE. See Class 31.
 210 Mrs. J. Weatherall, HUNTLEY KATE. See Class 31.
 211 Mrs. M. Williams, COLEY RAZAMATAZ. See Class 31.
 212 Mrs. T. Paterson, TABELA RHEA. See Class 31.
 215 Mrs. A. Burvill, SAROBI NOELLE. See Class 32.
 218 Mrs. J. Edmonds, HIGHNOONS ASTRONOMIE. See Class 32.
 219 Mr. E. Bransden, SMOKEYHILL SU FONG. See Class 32.
 223 Mrs. H. Dunham, SAHRA PHOEBE. See Class 33.
 224 Mrs. J. Park, ARBAYBI MELINDA. See Class 33.
 228 Mrs. R. Glen-West, VADIBATI ZARAFET. See Class 35.

Class 55.—A.C. LITTER.

Mrs. Brice-Webb

- 776 Mrs. B. A. Barrett, FINCHFIELD LITTER (1, 2a), M., (1, 5), F., (1, 13), F. Sire, Ch. Tewhit Tricosa. Dam, Finchfield Fleur. 10.5.73. Breeder, Exhibitor.
 777 Mrs. E. Dodge PASTORAL LITTER (13), F., (5), M. Sire, Willanbet Flute. Dam, Pastoral Gigi. 1.5.73. Breeder, Exhibitor.
 778 Mrs. P. Fawell, BARWELL DAWN (13), F.; BARWELL DIA (13), F.; BARWELL DOLON (5), M. Sire, Ch. Dolmeg Armand. Dam, Barwell Fortuna. 18.5.73. Breeder, Exhibitor.
 779 Mrs. J. Moss, JAQUEEN LITTER (3), 1F., 6M. Sire, Ch. Cargeous Lyrical Lad. Dam, Wisewell Grey Amber. 18.5.73. Breeder, Exhibitor. FOR SALE.
 780 Mrs. L. J. Stevenson, LONG-HAIR LITTER (10), 3M., 1F. Sire, Ch. Fishermore Paris. Dam, Pasha Sheba Sarita. 25.5.73. Breeder, Exhibitor.
 781 Miss V. Sheldrake, LITTER (1, 2, 2a, 3, 5), 4M., 1F. Sire, Norvician Fantastic. Dam, Gilrain Arwen Evenstar. 8.5.73. Breeder, Exhibitor.
 782 Mrs. J. Willis, EVERNDEN LITTER (2, 2a, 3), 2M., 2F. Sire, Evernden Altair. Dam, Evernden Corona. 24.5.73. Breeder, Exhibitor.

Class 56.—A.C. NOVICE EXHIBITOR (2-9 months), M. or F.

Mrs. Bastow

- 1 Mrs. E. Christian, SUSAN CHARLEROI. See Class 1.
 36 Mrs. Du-Four, BARABAR REZA. See Class 5.
 53 Mrs. M. Fletcher, JHAMOLIUA ROB ROY. See Class 8.
 82 Miss S. Perryman, DAVINDOS KORDELIA. See Class 11.
 98 Mrs. D. Cowell, DAMARIS TOMKINS. See Class 14.
 113 Mrs. B. Prestidge, CUTIEMAR DEBS DELIGHT. See Class 16.
 114 Mrs. B. Prestidge, CUTIEMAR DOLLY DAYDREAM. See Class 16.
 151 Messrs. Klein and Wheadon, ROZEL DON CARLOS. See Class 24.
 181 Mrs. J. White, SUMMERS JEMMA. See Class 28.
 192 Messrs. Klein and Wheadon, FRALLON RED ADMIRAL. See Class 30.
 219 Mr. E. Bransden, SMOKEYHILL SU FONG. See Class 33.
 223 Mrs. H. Dunham, SAHRA PHOEBE. See Class 33.
 225 Miss P. Healey, MIMMETT DOMINIQUE. See Class 33.

Class 57.—BLACK (2-9 months), M. or F.

Mrs. Johnson

- 238 Mrs. S. Blackman, SKYLARKING MERRILY (15), F. Sire, Ch. Brynbuboo Maximillian. Dam, Ch. Flanderwell Cillinna. 26.5.73. Breeder,
) Mrs. S. Blackman.
 Also in Classes 69, 403.

MAYFIELDS SIAMESE

PURE SEAL-POINT LINE



AT STUD :

Ch. Mayfields Hermes

(Ch. Killdown Vanguard x Ch. Mayfields Hasi)

Our elegant "Boy-Boy" is well known for his deep blue eyes of truly Oriental shape and his light coat—all of which he passes on to his prize-winning offspring

His gentle but firm way particularly welcomes maidens

And his son :

MAYFIELDS HASSAN

HELGA and KLAUS DESSAUER

18 Mayfields, Wembley Park

Middlesex

01-908 0745

Class 58.—WHITE (BLUE, ORANGE or ODD-EYED) (2-9 months), M. or F. **Mrs. Johnson**

- 239 Mrs. C. E. Betts, DELLSWOOD DIAMOND (14a), F. Sire, Dellswood Smoke Signal. Dam, Dellswood Opal. 15.11.72. Breeder, Exhibitor.
Also in Classes 69, 73, 206, 274, 374.

Class 59.—BRITISH BLUE (2-9 months), M. or F. **Mrs. Watts**

- 240 Mrs. P. H. Absalom, BRYNBUBOO PUSHKIN (16), F. Sire, Grand Ch. Brynbuboo Little Monarch. Dam, Ryelands Blue Heather. 8.3.73. Breeder, Exhibitor.

Also in Classes 219, 332.

- 241 Mrs. P. H. Absalom, BRYNBUBOO MUCHKIN (16), M. Sire, Grand Ch. Brynbuboo Little Monarch. Dam, Brynbuboo Blue Plush. 19.5.73. Breeder, Exhibitor.

Also in Classes 70, 298.

- 242 Mrs. S. Blackman, SKYLARKING MILLY MOSS (16), F. Sire, Ch. Brynbuboo Maximillian. Dam, Ch. Flanderwell Cillinna. 26.5.73. Breeder, Exhibitor.

Also in Classes 73, 332.

- 243 Mrs. D. Jarrett, PEARCROFT POLLYANNA (16), F. Sire, Grand Ch. Brynbuboo Little Monarch. Dam, Capstone Titania. 14.2.73. Breeder, Exhibitor.

Also in Classes 69, 397.

Class 60.—CREAM (2-9 months), M. or F. **Mrs. Ashford**

CANCELLED. NO ENTRIES

Class 61.—BLUE CREAM (2-9 months), M. or F. **Mrs. Ashford**

CANCELLED. NO ENTRIES.

Class 62.—SILVER TABBY (2-9 months), M. or F. **Mrs. Johnson**

- 244 Mrs. K. B. Allen, SIRELI SILVER RACHEL (18), F. Sire, Ch. Hillcross Silver Waratah. Dam, Sireli Jenny Wren. 5.4.73. Breeders, Mr. and Mrs. Watts.

Also in Classes 73, 286, 370, 403.

- 245 Mrs. C. M. Blakely, LYNXDOWN SILVER SALLY (18), F. Sire, Ch. Culverden Edward. Dam, Silver Sadie. 23.4.73. Breeder, Exhibitor.

Also in Classes 73, 370.

- 246 Mrs. C. M. Blakely, LYNXDOWN SILVER SALOME (18), F. Sire, Ch. Culverden Edward. Dam, Silver Sadie. 23.4.73. Breeder, Exhibitor.

Also in Classes 73, 370.

- 247 Mr. and Mrs. Clarke, SIRELI SILVER QUEST (18), M. Sire, Ch. Hillcross Silver Waratah. Dam, Sireli Silver Della. 15.3.73. Breeders, Mr. and Mrs. Watts.

Also in Classes 70, 72, 191, 332, 370.

- 248 Mrs. G. M. Dancer, GLENDANCE BLOCKBUSTER (18), M. Sire, Sireli Lyric. Dam, Sireli Silver Etoile. 22.3.73. Breeder, Exhibitor.

Also in Classes 68, 332.

- 249 Mrs. A. M. Pestell, SIRELI SILVER OPAL (18), F. Sire, Ch. Hillcross Silver Waratah. Dam, Ch. Sireli Dapple. 22.1.73. Breeders, Mr. and Mrs. Watts.

Also in Classes 71, 73, 197, 206, 241, 286, 370.

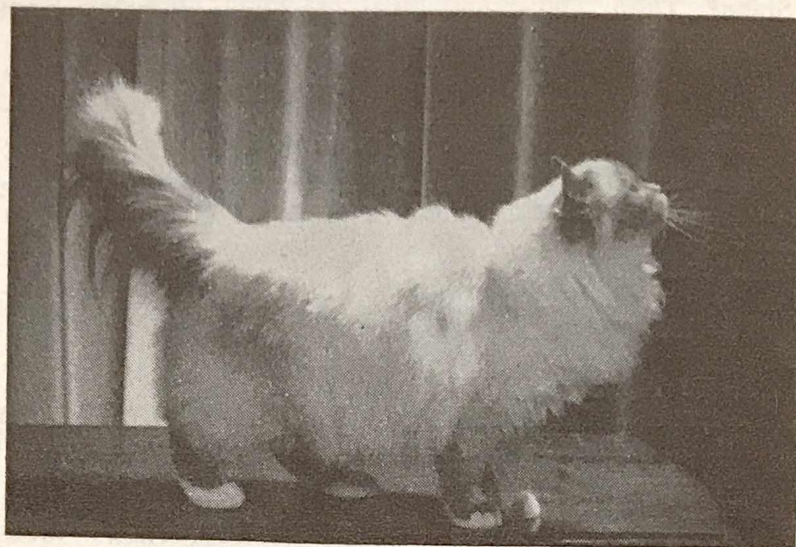
- 250 Mrs. N. A. M. Reeve, SEABREEZE PIPPIN (18), M. Sire, Ch. Culverden Edward. Dam, Reegan Thomasina. 22.5.73. Breeder, Exhibitor.

Also in Classes 68, 70, 72, 370.

- 251 Mrs. N. A. M. Reeve, SEABREEZE SILVER PENNY (18), F. Sire, Ch. Culverden Edward. Dam, Reegan Thomasina. 22.5.73. Breeder, Exhibitor.

Also in Classes 69, 71, 73, 374, 389.

DEARING CATS



CH. PRAHA KIOWA (B.P. Birman)

House-reared, registered and inoculated

ABYSSINIAN - BIRMAN - HAVANA

Kittens sometimes for sale

MRS. ENA READING

The Gables - Irchester Road - Rushden - Northants.

Telephone: Rushden 4976

Dewpoint Burmese

NOW AT STUD TO APPROVED QUEENS

CH. KALOS CASTOR (27)

WITH GOLDEN EYES AND SWEET TEMPERAMENT, Siring Healthy,
PRIZE-WINNING KITTENS (breeder: Mrs. J. Hance)

Five times Best in Show

Sire: Ch. Tapawingo Tahltan (27). Dam: Ch. Kalos Blue Aedon (27a)

Queens given every care and understanding in heated quarters

MRS. MARGARET GILES

BIRCH HOUSE, STAPLEHAY, TAUNTON

SOMERSET TA3 7HT

Tel.: Taunton 2822

Class 63.—SPOTTED (2-9 months), M. or F. Mrs. Johnson

- 252
WATSON
G.W.S.
Mrs. P. H. Absalom, BRYNBUBOO BABY EO (30) M. Sire, Ch. Brynbuboo Brown Peter. Dam, Ch. Brynbuboo Polly Perkins. 19.4.73. Breeder, Exhibitor.
Also in Classes 68, 219, 370.
- 253 Mrs. G. M. Dancer, GLENDANCE THOMAS (30), M. Sire, Sireli Lyric. Dam, Sireli Silver Etoile. 22.3.73. Breeder, Exhibitor.
Also in Classes 70, 370.
- 1
254 Mrs. A. K. Essex, KHAMENA HONEY QUEEN (30), F. Sire, Peerless Spun Gold. Dam, Ch. Peerless Brocade. 7.4.73. Breeder, Exhibitor.
3
Also in Classes 69, 332, 403.
- 2
256 Mr. M. J. Warde, SHERADA SILVER FINBARR (30), M. Side, Sherada Deiniol. Dam, Sherada Silver Claire. 14.3.73. Breeder, Exhibitor.
Also in Classes 68, 265, 370, 397.
- 257 Miss N. Healey, SILVERNIGHT KELTIE (30), M. Sire, Sireli Lyric. Dam, Silvernight Estelle. 16.4.73. Breeder, Exhibitor.
A
Also in Classes 68, 72, 197, 310, 370. FOR SALE.
- 258 Miss N. Healey, SILVERNIGHT KIRSTEIN (30), F. Sire, Sireli Lyric. Dam, Silvernight Estelle. 16.4.73. Breeder, Exhibitor. FOR SALE.
R
Also in Classes 69, 73.

Class 64.—RED or BROWN TABBY (2-9 months), M. or F. Mrs. Price

- 259 Mr. M. J. Warde, SHERADA BROWN STEPHANIE (20), F. Sire, Ch. Brynbuboo Brown Peter. Dam, Tabetha Arden. 23.5.73. Breeder, Exhibitor.
3
Also in Classes 69, 219, 298, 403.
- 260 Mr. M. J. Warde, SHERADA BROWN FREDERICK (20), M. Sire, Ch. Brynbuboo Brown Peter. Dam, Tabetha Arden. 23.5.73. Breeder, Exhibitor.
2
Also in Classes 68, 219, 349, 306.

1 252
Class 65.—TORTIE or TORTIE AND WHITE (2-9 months), M. or F. Mrs. Price

- 261 Messrs. H. V. and J. M. Biswell, PROSPERO MISS SNOOKS (21), F. Sire, Unknown. Dam, Prospero Fire Queen. 2.2.73. Breeders, Exhibitors.
2
Also in Classes 69, 71, 73, 185.

151 W/H
Class 66.—BI-COLOURED (2-9 months), M. or F. Mrs. Johnson

- 262 Mrs. I. Thelma Davis, THELDEN TINKERBELL (31), M. Sire, Unregistered. Dam, Theldon Suzannah. 1.2.73. Breeder, Exhibitor.
1
Also in Classes 68, 70, 205, 241, 265, 286, 403.

Class 67.—MANX (2-9 months), M. or F. Mrs. Beaver

- 263 Mrs. J. Hellman, TATLEBERRY PADDIWHACK (25), F. Sire, Ch. Tashmetum. Dam, Ch. Stonor Jeanne. 7.5.73. Breeder, Exhibitor.
1
Also in Classes 69, 71, 206, 280, 332.

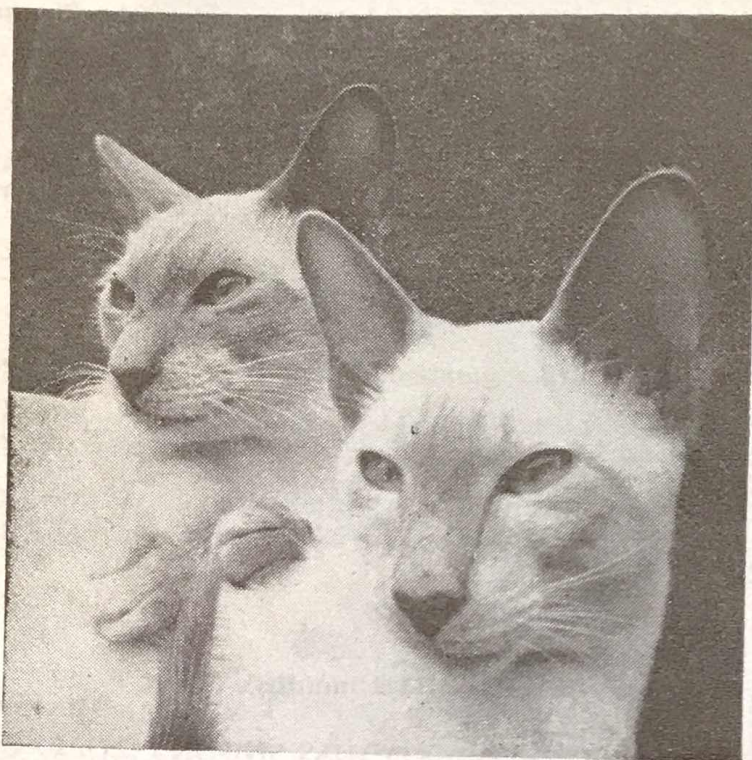
MISCELLANEOUS BRITISH S.H. CLASSES

Class 68.—A.C. BREEDERS (2-9 months), M. Mrs. Watts

- 248 Mrs. G. M. Dancer, GLENDANCE BLOCKBUSTER. See Class 62.
250 Mrs. N. Reeve, SEABREEZE PIPPIN. See Class 62.
252 Mrs. P. Absalom, BRYNBUBOO BABY BO. See Class 63.
256 Mr. M. Warde, SHERADA SILVER FINBARR. See Class 63.
257 Mrs. N. Healey, SILVERMIST KELTIE. See Class 63.
260 Mr. M. Warde, SHERADA BROWN FREDERICK. See Class 64.
262 Mrs. I. T. Davis, THELDON TINKERBELL. See Class 66.

QUINTRAL CATTERY

Selectively-bred, prize-winning Siamese



AT STUD :

**Ch. Quintral
Moonsilver
B.P.**

(4 C.C.'s)

Winner of
B.O.B. awards

and

**Ch. Quintral
Pirata
L.P.**

(4 C.C.'s)

Three times
B.I.S. and winner
of B.O.B. awards

These boys, pictured as kittens, are now available to approved
queens **FEE £7.25**

Also the sire of the above Champions

Quintral Frosty Fircone

(1 C.C.), B.I.S., Herts. and Middlesex, 1970 **FEE £6.25**

SEAL-POINT, BLUE-POINT, CHOCOLATE-POINT,
LILAC-POINT AND RED-POINT KITTENS
available at various times throughout the year

MRS. L. ABBEY
Allington Cottage - Horseshoe Hill - Burnham
Bucks.

Telephone: Burnham 4988

- Class 69.—A.C. BREEDERS (2-9 months), F.** **Mrs. Ashford**
- 238 Mrs. S. Blackman, SKYLARKING MERRILY. See Class 57.
 239 Mrs. C. Betts, DELLSWOOD DIAMOND. See Class 58.
 243 Mrs. D. Jarrett, PEARCROFT POLLYANNA. See Class 59.
 251 Mrs. N. Reeve, SEABREEZE SILVER PENNY. See Class 62.
 254 Mrs. A. Essex, KHAMENA HONEY QUEEN. See Class 63.
 258 Miss N. Healey, SILVERNIGHT KIRSTEEN. See Class 63.
 259 Mr. M. Warde, SHERADA BROWN STEPHANIE. See Class 64.
 261 Messrs. H. Biswell and J. Biswell, PROSPERO MISS NOOKS.
 See Class 65.
 263 Mr. J. Hellman, TATLEBERRY PADDIWHACK. See Class 67.

- Class 70.—A.C. NOVICE (2-9 months), M.** **Mrs. Thake**
- 241 Mrs. P. Absalom, BRYNBUBOO MUCHKIN. See Class 59.
 247 Mr. and Mrs. Clarke, SIRELI SILVER QUEST. See Class 62.
 250 Mrs. N. Reeve, SEABREEZE PIPPIN. See Class 62.
 253 Mrs. G. M. Dancer, GLENDANCE THOMAS. See Class 63.
 262 Mrs. I. T. Davis, THELDON TINKERBELL. See Class 66.

- Class 71.—A.C. NOVICE (2-9 months), F.** **Mrs. Price**
- 249 Mrs. A. Pestell, SIRELI SILVER OPAL. See Class 62.
 251 Mrs. N. Reeve, SEABREEZE SILVER PENNY. See Class 62.
 261 H. V. Biswell and J. Biswell, PROSPERO MISS SNOOKS.
 See Class 65.
 263 Mrs. J. Hellman, TATLEBERRY PADDIWHACK. See Class 67.

- Class 72.—A.C. MAIDEN (2-9 months), M.** **Mrs. Johnson**
- 247 Mr. and Mrs. Clarke, SIRELI SILVER QUEST. See Class 62.
 250 Mrs. N. Reeve, SEABREEZE PIPPIN. See Class 62.
 257 Miss N. Healey, SILVERNIGHT KELTIE. See Class 63.

- Class 73.—A.C. MAIDEN (2-9 months), F.** **Miss Prentis**
- 239 Mrs. C. E. Betts, DELLSWOOD DIAMOND. See Class 58.
 242 Mrs. S. Blackman, SKYLARKING MILLY MOSS. See Class 59.
 244 Miss K. B. Allen, SIRELI SILVER RACHEL. See Class 62.
 245 Mrs. C. M. Blakely, LYNXDOWN SILVER SALLY. See Class 62.
 246 Mrs. C. M. Blakely, LYNXDOWN SILVER SALOME. See Class 62.
 249 Mrs. A. Pestell, SIRELI SILVER OPAL. See Class 62.
 251 Mrs. N. Reeve, SEABREEZE SILVER PENNY. See Class 62.
 258 Miss N. Healey, SILVERNIGHT KIRSTEEN. See Class 63.
 261 H. V. Biswell and J. Biswell, PROSPERO MISS SNOOKS.
 See Class 65.

- Class 74.—A.V. LITTER.** **Miss Prentis**
- 783 Mrs. S. Blackman, LITTER OF THREE (15), M., (16), F. Sire, Ch. Brynbuboo Maximillian. Dam, Ch. Flanderwell Cillinna. 26.5.73. Breeder,
 2 Exhibitor.

- ¹⁸⁷ **Class 75.—A.V. NOVICE EXHIBITOR, M. or F.** **Mrs. Johnson**
- CANCELLED. NO ENTRIES.

FOREIGN S.H. KITTENS

- Class 76.—HAVANA (3-5 months), M.** **Mrs. Thake**
- 264 Mrs. Angela Sayer, SOLITAIRE MALINO (29), M. Sire, Ch. Solitaire Maneki Neko. Dam, Ch. Solitaire Tiare Tahiti. 31.3.73. Breeder, Exhibitor.
 2 Also in Classes 102, 266.
 265 Mrs. H. Bramble, CHEROKEE CLUNKCLICK (29), M. Sire, Flayre Minstrel Boy. Dam, San Clotilda. 24.4.73. Breeder, Exhibitor.
 1 Also in Classes 102, 105, 219, 266.